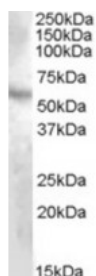




DMP1 Antibody

CATALOG NUMBER: 46-832



Western blot analysis of DMP1 in human kidney lysate (35 ug protein in RIPA buffer) using DMP1 Antibody at 1 ug/mL.

Specifications

SPECIES REACTIVITY:	Human
TESTED APPLICATIONS:	ELISA, WB
APPLICATIONS:	ELISA: Antibody detection limit dilution 1:4,000. Western Blot: Approximately 55 kDa band observed in human Ileum and kidney lysates (calculated MW of 55.8 kDa according to NP_004398.1 and of 54.1 according to NP_001073380.1). Recommended concentration: 1
POSITIVE CONTROL:	1) Cat. No. 1305 - Human Kidney Tissue Lysate
SPECIFICITY:	This antibody is expected to recognize both reported isoforms (NP_004398.1; NP_001073380.1).
IMMUNOGEN:	DMP1 antibody was raised against a 12 amino acid synthetic peptide near the internal region of DMP1.
HOST SPECIES:	Goat

Properties

PURIFICATION:	DMP1 antibody was purified from goat serum by ammonium sulphate precipitation followed by antigen affinity chromatography using the immunizing peptide.
PHYSICAL STATE:	Liquid
BUFFER:	DMP1 antibody is supplied in Tris saline, 0.02% sodium azide, pH 7.3 with 0.5% bovine serum albumin.
CONCENTRATION:	500 ug/mL
STORAGE CONDITIONS:	Aliquot and store at -20°C. Minimize freezing and thawing.
CLONALITY:	Polyclonal
CONJUGATE:	Unconjugated

Additional Info

ALTERNATE NAMES:	DMP1, dentin matrix acidic phosphoprotein, dentin matrix protein 1, ARHP, ARHR, DMP-1
ACCESSION NO.:	NP_004398.1, NP_001073380.1
PROTEIN GI NO.:	4758172
OFFICIAL SYMBOL:	DMP1
GENE ID:	1758

Background

REFERENCES: 1) Qin C, D'Souza R, Feng JQ. Dentin matrix protein 1 (DMP1): new and important roles for biomineralization and phosphate homeostasis. J Dent Res. 2007 Dec;86(12):1134-41. Review.

FOR RESEARCH USE ONLY

December 13, 2016