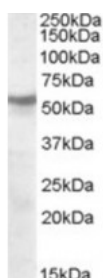




CHRNA1 Antibody

CATALOG NUMBER: 46-824



Western blot analysis of CHRNA1 in human cerebellum lysate (35 ug protein in RIPA buffer) using CHRNA1 Antibody at 1 ug/mL.

Specifications

SPECIES REACTIVITY:	Human
TESTED APPLICATIONS:	ELISA, WB
APPLICATIONS:	ELISA: Antibody detection limit dilution 1:1,000. Western Blot: Approximately 55 kDa band observed in human brain (cerebellum, hippocampus, frontal cortex) lysates (calculated MW of 56.7 kDa according to NP_000738.2). Recommended concentration: 1-3 ug
POSITIVE CONTROL:	1) Cat. No. 1362 - Human Cerebellum, Left Lysate Cat. No. 1363 - Human Cerebellum, Right Lysate
IMMUNOGEN:	CHRNA1 antibody was raised against a 12 amino acid synthetic peptide near the internal region of CHRNA1.
HOST SPECIES:	Goat

Properties

PURIFICATION:	CHRNA1 antibody was purified from goat serum by ammonium sulphate precipitation followed by antigen affinity chromatography using the immunizing peptide.
PHYSICAL STATE:	Liquid
BUFFER:	CHRNA1 antibody is supplied in Tris saline, 0.02% sodium azide, pH 7.3 with 0.5% bovine serum albumin.
CONCENTRATION:	500 ug/mL
STORAGE CONDITIONS:	Aliquot and store at -20°C. Minimize freezing and thawing.
CLONALITY:	Polyclonal
CONJUGATE:	Unconjugated

Additional Info

ALTERNATE NAMES:	CHRNA1, cholinergic receptor, nicotinic, beta 1 (muscle), ACHRB, CHRNA, CMS1D, CMS2A, SCCMS, beta polypeptide 1 (muscle), nicotinic acetylcholine receptor beta 1 subunit
ACCESSION NO.:	NP_000738.2
PROTEIN GI NO.:	41327726
OFFICIAL SYMBOL:	CHRNA1

GENE ID: 1140

Background

REFERENCES: 1) Lou XY, Ma JZ, Payne TJ, Beuten J, Crew KM, Li MD. Gene-based analysis suggests association of the nicotinic acetylcholine receptor beta1 subunit (CHRNA1) and M1 muscarinic acetylcholine receptor (CHRM1) with vulnerability for nicotine dependence. Hum Genet. 2006 Oct;120(3):381-9. Epub 2006 Jul 28.

FOR RESEARCH USE ONLY

December 13, 2016