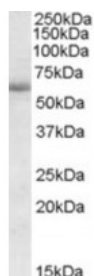




Cadherin-like 23 Antibody

CATALOG NUMBER: 46-822



Western blot analysis of Cadherin-like 23
in human amygdala lysate (35 ug protein in
RIPA buffer) using Cadherin-like 23
Antibody at 1 ug/mL.

Specifications

SPECIES REACTIVITY:	Human
TESTED APPLICATIONS:	ELISA, WB
APPLICATIONS:	ELISA: Antibody detection limit dilution 1:1,000. Western Blot: Approximately 60 kDa band observed in human brain (amygdala and frontal cortex lysates (calculated MW of 58.6 kDa according to NP_443068.1). Recommended concentration: 1-3 ug/mL.
POSITIVE CONTROL:	1) Cat. No. XBL-10131 - Human Amygdala Tissue Lysate
SPECIFICITY:	This antibody is expected to recognize both reported isoforms (NP_071407.3; NP_443068.1).
IMMUNOGEN:	Cadherin-like 23 antibody was raised against a 16 amino acid synthetic peptide near the internal region of Cadherin-like 23.
HOST SPECIES:	Goat

Properties

PURIFICATION:	Cadherin-like 23 antibody was purified from goat serum by ammonium sulphate precipitation followed by antigen affinity chromatography using the immunizing peptide.
PHYSICAL STATE:	Liquid
BUFFER:	Cadherin-like 23 antibody is supplied in Tris saline, 0.02% sodium azide, pH 7.3 with 0.5% bovine serum albumin.
CONCENTRATION:	500 ug/mL
STORAGE CONDITIONS:	Aliquot and store at -20°C. Minimize freezing and thawing.
CLONALITY:	Polyclonal
CONJUGATE:	Unconjugated

Additional Info

ALTERNATE NAMES:	CDH23, cadherin-like 23, DFNB12, DKFZp434P2350, FLJ00233, FLJ36499, KIAA1774, KIAA1812, MGC102761, USH1D, USH1H, OTTHUMP00000044780, cadherin 23, cadherin related 23, cadherin-23, otocadherin, UNQ1894/PRO4340
ACCESSION NO.:	NP_071407.3, NP_443068.1

PROTEIN GI NO.: 153251203

OFFICIAL SYMBOL: CDH23

GENE ID: 64072

Background

FOR RESEARCH USE ONLY

December 13, 2016