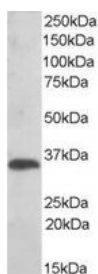




## TXNDC1 Antibody

CATALOG NUMBER: 46-541



Western blot analysis of TXNDC1 in human liver lysate (35 ug protein in RIPA buffer) using TXNDC1 Antibody at 0.01 ug/mL.

### Specifications

<b>SPECIES REACTIVITY:</b>	Human
<b>TESTED APPLICATIONS:</b>	ELISA, IHC, WB
<b>APPLICATIONS:</b>	ELISA: Antibody detection limit dilution 1:64,000. Western Blot: Approximately 35 kDa band observed in human liver lysates (calculated MW of 31.8 kDa according to NP_110382). Recommended concentration: 0.01-0.03 ug/mL. Immunohistochemistry: In paraffin embedded human spleen shows textured staining in the cytoplasm of some splenocytes. Recommended concentration, 3-6 ug/mL.
<b>POSITIVE CONTROL:</b>	1) Cat. No. 1304 - Human Liver Tissue Lysate
<b>IMMUNOGEN:</b>	TXNDC1 antibody was raised against a 12 amino acid synthetic peptide near the C-Terminus of TXNDC1.
<b>HOST SPECIES:</b>	Goat

### Properties

<b>PURIFICATION:</b>	TXNDC1 antibody was purified from goat serum by ammonium sulphate precipitation followed by antigen affinity chromatography using the immunizing peptide.
<b>PHYSICAL STATE:</b>	Liquid
<b>BUFFER:</b>	TXNDC1 antibody is supplied in Tris saline, 0.02% sodium azide, pH 7.3 with 0.5% bovine serum albumin.
<b>CONCENTRATION:</b>	500 ug/mL
<b>STORAGE CONDITIONS:</b>	Aliquot and store at -20°C. Minimize freezing and thawing.
<b>CLONALITY:</b>	Polyclonal
<b>CONJUGATE:</b>	Unconjugated

### Additional Info

<b>ALTERNATE NAMES:</b>	TXNDC, thioredoxin domain containing 1, TMX, TXNDC1, DKFZP564E1962, thioredoxin domain-containing, thioredoxin-related transmembrane protein, TXNDC, PSEC0085, UNQ235/PRO268
<b>ACCESSION NO.:</b>	NP_110382
<b>PROTEIN GI NO.:</b>	151101292
<b>OFFICIAL SYMBOL:</b>	TMX1

---

**GENE ID:** 81542

---

**Background**

**REFERENCES:** 1) Matsuo Y, Akiyama N, Nakamura H, Yodoi J, Noda M, Kizaka-Kondoh S. Identification of a novel thioredoxin-related transmembrane protein. J Biol Chem. 2001 Mar 30;276(13):10032-8. Epub 2001 Jan 4.

---

**FOR RESEARCH USE ONLY**

December 13, 2016