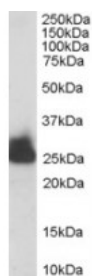




Triosephosphate isomerase Antibody

CATALOG NUMBER: 46-528



Western blot analysis of Triosephosphate isomerase in human liver lysate (RIPA buffer, 30 ug total protein per lane) using Triosephosphate isomerase Antibody at 0.003 ug/mL.

Specifications

SPECIES REACTIVITY:	Human, Mouse
TESTED APPLICATIONS:	ELISA, WB
APPLICATIONS:	ELISA: Antibody detection limit dilution 1:16,000. Western Blot: Approximately 26 kDa band observed in human liver and human hepatoblastoma HepG2 cell lysates (calculated MW of 26.7 kDa according to NP_000356). Recommended concentration: 0.01-0.03 ug/mL.
POSITIVE CONTROL:	1) Cat. No. 1304 - Human Liver Tissue Lysate
IMMUNOGEN:	Triosephosphate isomerase antibody was raised against a 13 amino acid synthetic peptide near the C-Terminus of Triosephosphate isomerase.
HOST SPECIES:	Goat

Properties

PURIFICATION:	Triosephosphate isomerase antibody was purified from goat serum by ammonium sulphate precipitation followed by antigen affinity chromatography using the immunizing peptide.
PHYSICAL STATE:	Liquid
BUFFER:	Triosephosphate isomerase antibody is supplied in Tris saline, 0.02% sodium azide, pH 7.3 with 0.5% bovine serum albumin.
CONCENTRATION:	500 ug/mL
STORAGE CONDITIONS:	Aliquot and store at -20°C. Minimize freezing and thawing.
CLONALITY:	Polyclonal
CONJUGATE:	Unconjugated

Additional Info

ALTERNATE NAMES:	TPI1, TPI, triosephosphate isomerase 1
ACCESSION NO.:	NP_000356
PROTEIN GI NO.:	4507645

OFFICIAL SYMBOL: TPI1

GENE ID: 7167

Background

REFERENCES: 1) Jiang PZ, Gan M, Huang H, Shen XM, Wang S, Yao KT. Proteomics-based Identification of Proteins with Altered Expression Induced by 12-O-Tetradecanoylphorbol 13-acetate in Nasopharyngeal Carcinoma CNE2 Cells. Acta Biochim Biophys Sin (Shanghai). 2005 Feb;37(2):97-106.

FOR RESEARCH USE ONLY

December 13, 2016