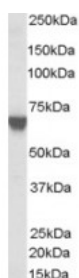




TOM1L2 Antibody

CATALOG NUMBER: 46-505



Western blot analysis of TOM1L2 in A431 lysate (35 ug protein in RIPA buffer) using TOM1L2 Antibody at 0.03 ug/mL.

Specifications

SPECIES REACTIVITY:	Human
TESTED APPLICATIONS:	ELISA, IHC, WB
APPLICATIONS:	ELISA: Antibody detection limit dilution 1:64,000. Western Blot: Approximately 60 kDa band observed in human Fibroblast A431 lysates (calculated MW of 51.8 kDa according to NP_653279). Recommended concentration: 0.1-1 ug/mL. IHC: In paraffin embedded Human Skeletal Muscle shows variable staining from fibre to fibre. Recommended concentration, 5-10ug/ml.
POSITIVE CONTROL:	1) Cat. No. 1202 - A431 Cell Lysate
IMMUNOGEN:	TOM1L2 antibody was raised against a 15 amino acid synthetic peptide near the C-Terminus of TOM1L2.
HOST SPECIES:	Goat

Properties

PURIFICATION:	TOM1L2 antibody was purified from goat serum by ammonium sulphate precipitation followed by antigen affinity chromatography using the immunizing peptide.
PHYSICAL STATE:	Liquid
BUFFER:	TOM1L2 antibody is supplied in Tris saline, 0.02% sodium azide, pH 7.3 with 0.5% bovine serum albumin.
CONCENTRATION:	500 ug/mL
STORAGE CONDITIONS:	Aliquot and store at -20°C. Minimize freezing and thawing.
CLONALITY:	Polyclonal
CONJUGATE:	Unconjugated

Additional Info

ALTERNATE NAMES:	TOM1L2, FLJ32746, target of myb1-like 2 (chicken), target of myb1 (chicken) homolog-like 1, target of myb1 (chicken) homolog-like 2,
ACCESSION NO.:	NP_653279
PROTEIN GI NO.:	75677323
OFFICIAL SYMBOL:	TOM1L2

GENE ID: 146691

Background

REFERENCES: 1) Blagoev B, Ong SE, Kratchmarova I, Mann M. Temporal analysis of phosphotyrosine-dependent signaling networks by quantitative proteomics. *Nat Biotechnol.* 2004 Sep;22(9):1139-45. Epub 2004 Aug 15.

FOR RESEARCH USE ONLY

December 13, 2016