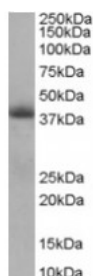




TIM-50 Antibody

CATALOG NUMBER: 46-496



Western blot analysis of TIM-50 in human heart lysate (RIPA buffer, 35 ug total protein per lane) using TIM-50 Antibody at 0.5 ug/mL.

Specifications

SPECIES REACTIVITY:	Human
TESTED APPLICATIONS:	ELISA, WB
APPLICATIONS:	ELISA: Antibody detection limit dilution 1:16,000. Western Blot: experiments gave bands at approximately 40 kDa in human heart lysate after 0.5 ug/mL antibody staining. This band corresponds to earlier findings in literature with different antibodies (PMID: 15044455). This protein has a calculated MW of 50.5 kDa according to NP_001001563. Recommended concentration: 0.5-3 ug/mL.
POSITIVE CONTROL:	1) Cat. No. 1301 - Human Heart Tissue Lysate
SPECIFICITY:	This antibody is expected to recognize an epitope corresponding to aa 396-409 of human TIM50.
IMMUNOGEN:	TIM-50 antibody was raised against a 15 amino acid synthetic peptide near the internal region of TIM-50.
HOST SPECIES:	Goat

Properties

PURIFICATION:	TIM-50 antibody was purified from goat serum by ammonium sulphate precipitation followed by antigen affinity chromatography using the immunizing peptide.
PHYSICAL STATE:	Liquid
BUFFER:	TIM-50 antibody is supplied in Tris saline, 0.02% sodium azide, pH 7.3 with 0.5% bovine serum albumin.
CONCENTRATION:	500 ug/mL
STORAGE CONDITIONS:	Aliquot and store at -20°C. Minimize freezing and thawing.
CLONALITY:	Polyclonal
CONJUGATE:	Unconjugated

Additional Info

ALTERNATE NAMES:	TIMM50, TIM50L, translocase of inner mitochondrial membrane 50 homolog (yeast), Tim50-like protein, homolog of yeast Tim50, TIM50, PRO1512
ACCESSION NO.:	NP_001001563
PROTEIN GI NO.:	48526509

OFFICIAL SYMBOL:	TIMM50
GENE ID:	92609

Background

REFERENCES: 1) Guo Y, Cheong N, Zhang Z, De Rose R, Deng Y, Farber SA, Fernandes-Alnemri T, Alnemri ES. Tim50, a component of the mitochondrial translocator, regulates mitochondrial integrity and cell death. J Biol Chem. 2004 Jun 4;279(23):24813-25. Epub 2004 Mar 25.

FOR RESEARCH USE ONLY

December 13, 2016