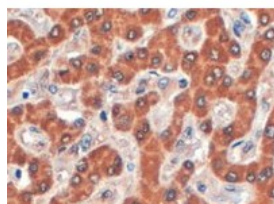




Syntenin 2 Antibody

CATALOG NUMBER: 46-460



Immunohistochemistry staining of Syntenin 2 in paraffin embedded human liver using Syntenin 2 Antibody at 4 u. Steamed antigen retrieval with citrate buffer pH 6, HRP-staining.

Specifications

SPECIES REACTIVITY:	Human
TESTED APPLICATIONS:	ELISA
APPLICATIONS:	ELISA: Antibody detection limit dilution 1:16,000. Immunohistochemistry: In paraffin embedded human liver shows staining of cytoplasm in hepatocytes. Recommended concentration, 4-6 ug/mL.
SPECIFICITY:	This antibody is expected to recognize both human isoforms (NP_056500; NP_536737).
IMMUNOGEN:	Syntenin 2 antibody was raised against a 13 amino acid synthetic peptide near the C-Terminus of Syntenin 2.
HOST SPECIES:	Goat

Properties

PURIFICATION:	Syntenin 2 antibody was purified from goat serum by ammonium sulphate precipitation followed by antigen affinity chromatography using the immunizing peptide.
PHYSICAL STATE:	Liquid
BUFFER:	Syntenin 2 antibody is supplied in Tris saline, 0.02% sodium azide, pH 7.3 with 0.5% bovine serum albumin.
CONCENTRATION:	500 ug/mL
STORAGE CONDITIONS:	Aliquot and store at -20°C. Minimize freezing and thawing.
CLONALITY:	Polyclonal
CONJUGATE:	Unconjugated

Additional Info

ALTERNATE NAMES:	SDCBP2, ST-2, SITAC18, syndecan binding protein (syntenin) 2, syntenin-2
ACCESSION NO.:	NP_056500, NP_536737
PROTEIN GI NO.:	38016916
OFFICIAL SYMBOL:	SDCBP2
GENE ID:	27111

Background

REFERENCES:

- 1) Koroll M, Rathjen FG, Volkmer H. The neural cell recognition molecule neuroligin interacts with syntenin-1 but not with syntenin-2, both of which reveal self-associating activity. J Biol Chem. 2001 Apr 6;276(14):10646-54.

FOR RESEARCH USE ONLY

December 13, 2016