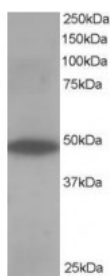




## ORP1 Antibody

CATALOG NUMBER: 46-106



Western Blot staining (0.5ug/ml) of Human Muscle lysate (RIPA buffer, 35ug total protein per lane). Primary incubated for 1 hour. Detected by western blot using chemiluminescence.

### Specifications

<b>SPECIES REACTIVITY:</b>	Human
<b>TESTED APPLICATIONS:</b>	ELISA, WB
<b>APPLICATIONS:</b>	ELISA: antibody detection limit dilution 1:16000. Western Blot: Approx 48kDa band observed in Human Skeletal Muscle lysates (predicted MW of 50kDa according to NP_060500). Recommended for use at 0.5-2ug/ml.
<b>POSITIVE CONTROL:</b>	1) Cat. No. 1375 - Human Skeletal Muscle Tissue Lysate
<b>SPECIFICITY:</b>	This antibody is expected to recognise both reported human isoforms of this protein.
<b>IMMUNOGEN:</b>	ORP1 antibody was raised against a 13 amino acid synthetic peptide near the C-Terminus of ORP1.
<b>HOST SPECIES:</b>	Goat

### Properties

<b>PURIFICATION:</b>	ORP1 antibody was purified from goat serum by ammonium sulphate precipitation followed by antigen affinity chromatography using the immunizing peptide.
<b>PHYSICAL STATE:</b>	Liquid
<b>BUFFER:</b>	ORP1 antibody is supplied in Tris saline, 0.02% sodium azide, pH 7.3 with 0.5% bovine serum albumin.
<b>CONCENTRATION:</b>	500 ug/mL
<b>STORAGE CONDITIONS:</b>	Aliquot and store at -20°C. Minimize freezing and thawing.
<b>CLONALITY:</b>	Polyclonal
<b>CONJUGATE:</b>	Unconjugated

### Additional Info

<b>ALTERNATE NAMES:</b>	OSBPL1A, ORP1, OSBPL1B, FLJ10217, oxysterol binding protein-like 1A, OSBP-related protein 1, oxysterol-binding protein-like 1B, oxysterol-binding protein-related protein 1, OSBP8, OSBPL1
<b>ACCESSION NO.:</b>	NP_060500, NP_542164, NP_579802
<b>PROTEIN GI NO.:</b>	19718746

**OFFICIAL SYMBOL:** OSBPL1A

**GENE ID:** 114876

### Background

**REFERENCES:** 1) Lehto M, Laitinen S, Chinetti G, Johansson M, Ehnholm C, Staels B, Ikonen E, Olkkonen VM. The OSBP-related protein family in humans. J Lipid Res. 2001 Aug;42(8):1203-13.

**FOR RESEARCH USE ONLY**

December 13, 2016