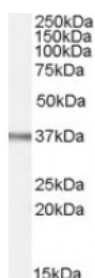




Ogg1 Antibody

CATALOG NUMBER: 45-994



Western Blot (0.1ug/ml) staining of Rat Spleen lysate (35ug protein in RIPA buffer). Primary incubation was 1 hour. Detected by chemiluminescence.

Specifications

SPECIES REACTIVITY:	Rat
TESTED APPLICATIONS:	ELISA, WB
APPLICATIONS:	ELISA: antibody detection limit dilution 1:128000. Western Blot: Approx 37kDa band observed in Rat Spleen lysates (calculated MW of 38.7kDa according to Rat NP_110497.1 and 38.8kDa according to Mouse NP_035087.2). Recommended concentration: 0.1-0.3ug/ml.
POSITIVE CONTROL:	1) Cat. No. 1466 - Rat Spleen Tissue Lysate
IMMUNOGEN:	Ogg1 antibody was raised against a 16 amino acid synthetic peptide near the internal region of Ogg1.
HOST SPECIES:	Goat

Properties

PURIFICATION:	Ogg1 antibody was purified from goat serum by ammonium sulphate precipitation followed by antigen affinity chromatography using the immunizing peptide.
PHYSICAL STATE:	Liquid
BUFFER:	Ogg1 antibody is supplied in Tris saline, 0.02% sodium azide, pH 7.3 with 0.5% bovine serum albumin.
CONCENTRATION:	500 ug/mL
STORAGE CONDITIONS:	Aliquot and store at -20°C. Minimize freezing and thawing.
CLONALITY:	Polyclonal
CONJUGATE:	Unconjugated

Additional Info

ALTERNATE NAMES:	Ogg1, 8-oxoguanine DNA glycosylase, Mmh
ACCESSION NO.:	NP_035087.2
PROTEIN GI NO.:	18921208
OFFICIAL SYMBOL:	OGG1
GENE ID:	18294 (mouse); 81528 (rat);

Background

REFERENCES: 1) Kovtun IV, Liu Y, Bjoras M, Klungland A, Wilson SH, McMurray CT. OGG1 initiates age-dependent CAG trinucleotide expansion in somatic cells. Nature. 2007 May 24;447(7143):447-52. Epub 2007 Apr 22.

FOR RESEARCH USE ONLY

December 13, 2016