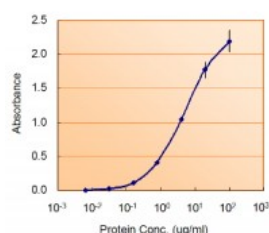




NODAL Antibody

CATALOG NUMBER: 45-974



Antibody used as detection antibody in Sandwich ELISA at (1.5ug/ml).

Specifications

SPECIES REACTIVITY:	Human
TESTED APPLICATIONS:	EIA, ELISA
APPLICATIONS:	ELISA: antibody detection limit dilution 1:8000. Enzyme immunoassay: Sandwich-type ELISA with increasing amount of recombinant NODAL captured by a rabbit antibody. Recommended reporter concentration: 1-2ug/ml
IMMUNOGEN:	NODAL antibody was raised against an 11 amino acid synthetic peptide near the internal region of NODAL.
HOST SPECIES:	Goat

Properties

PURIFICATION:	NODAL antibody was purified from goat serum by ammonium sulphate precipitation followed by antigen affinity chromatography using the immunizing peptide.
PHYSICAL STATE:	Liquid
BUFFER:	NODAL antibody is supplied in Tris saline, 0.02% sodium azide, pH 7.3 with 0.5% bovine serum albumin.
CONCENTRATION:	500 ug/mL
STORAGE CONDITIONS:	Aliquot and store at -20°C. Minimize freezing and thawing.
CLONALITY:	Polyclonal
CONJUGATE:	Unconjugated

Additional Info

ALTERNATE NAMES:	NODAL, nodal homolog (mouse), MGC138230, mouse nodal homolog precursor, nodal, mouse, homolog, HTX5
ACCESSION NO.:	NP_060525.2
PROTEIN GI NO.:	29568107
OFFICIAL SYMBOL:	NODAL
GENE ID:	4838

Background

REFERENCES:	1) Hendrix MJ, Seftor EA, Seftor RE, Kasemeier-Kulesa J, Kulesa PM, Postovit LM. Reprogramming metastatic tumour cells with embryonic microenvironments. Nat Rev Cancer. 2007 Apr;7(4):246-55. Review.
--------------------	--

