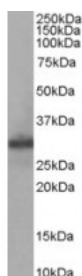


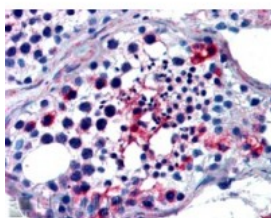


FHL1 Antibody

CATALOG NUMBER: 45-591



Western Blot staining (0.05ug/ml) of Human Muscle lysate (RIPA buffer, 35ug total protein per lane). Primary incubated for 1 hour. Detected by western blot using chemiluminescence.



Immunohistochemistry (2.5ug/ml) staining of paraffin embedded Human Testis. Steamed antigen retrieval with citrate buffer pH 6, AP-staining.

Specifications

SPECIES REACTIVITY:	Human, Mouse
TESTED APPLICATIONS:	ELISA, IHC-P, WB
APPLICATIONS:	ELISA: antibody detection limit dilution 1:32000. Western Blot: Approx 30kDa band observed in Human Muscle lysates (calculated MW of 31.9kDa according to NP_001440). Recommended concentration: 0.05-0.3ug/ml. Immunohistochemistry: In paraffin embedded Human Testis shows fibrous staining in the cytoplasm of developing sperm cells.. Recommended concentration, 2-2ug/ml.
POSITIVE CONTROL:	1) Cat. No. 1375 - Human Skeletal Muscle Tissue Lysate
SPECIFICITY:	This antibody is expected to recognise isoforms 2(NP_001440.1) and 5 (NP_001153171.1). Since June 2009 the second N residue in the immunizing peptide is no longer representative as it has been substituted by Q at position 284 of NP_001440.2. Variants NP
IMMUNOGEN:	FHL1 antibody was raised against a 13 amino acid synthetic peptide near the internal region of FHL1.
HOST SPECIES:	Goat

Properties

PURIFICATION:	FHL1 antibody was purified from goat serum by ammonium sulphate precipitation followed by antigen affinity chromatography using the immunizing peptide.
PHYSICAL STATE:	Liquid
BUFFER:	FHL1 antibody is supplied in Tris saline, 0.02% sodium azide, pH 7.3 with 0.5% bovine serum albumin.
CONCENTRATION:	500 ug/mL
STORAGE CONDITIONS:	Aliquot and store at -20°C. Minimize freezing and thawing.
CLONALITY:	Polyclonal
CONJUGATE:	Unconjugated

Additional Info

ALTERNATE NAMES:	FHL1, KYO-T, SLIM1, bA535K18.1, RP11-535K18.1, FHL1B, four and a half LIM domains 1, Four-and-a-half LIM
-------------------------	--

domains 1, bA535K18.1 (LIM protein SLIMMER)

ACCESSION NO.: NP_001440

PROTEIN GI NO.: 21361122

OFFICIAL SYMBOL: FHL1

GENE ID: 2273

Background

REFERENCES: 1) Brown S, McGrath MJ, Ooms LM, Gurung R, Maimone MM, Mitchell CA. Characterization of two isoforms of the skeletal muscle LIM protein 1, SLIM1. Localization of SLIM1 at focal adhesions and the isoform slimmer in the nucleus of myoblasts and cytoplasm of myotubes suggests distinct roles in the cytoskeleton and in nuclear-cytoplasmic communication. J Biol Chem. 1999 Sep 17;274(38):27083-91.

FOR RESEARCH USE ONLY

December 13, 2016