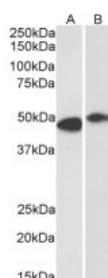


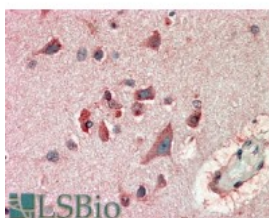


FBL2 Antibody

CATALOG NUMBER: 45-571



Western blot (0.3 ug/ml) staining of Human Frontal Cortex (A) and Rat (B) Brain lysate (35 ug protein in RIPA buffer). Primary incubation was 1 hour. Detected by chemiluminescence



Immunohistochemistry (10ug/ml) staining of paraffin embedded Human Cerebral Cortex. Steamed antigen retrieval with citrate buffer pH 6, AP-staining.

Specifications

SPECIES REACTIVITY:	Human
TESTED APPLICATIONS:	ELISA, IHC-P, WB
APPLICATIONS:	ELISA: antibody detection limit dilution 1:32000. Western Blot: Approx 48kDa band observed in Human Brain lysates (calculated MW of 47.1kDa according to NP_036289.2). Recommended concentration: 0.3-1.0 ug/ml. Immunohistochemistry: In paraffin embedded Human Cerebral Cortex shows cytoplasm staining in neuronal bodies. Recommended concentration, 5-10ug/ml.
POSITIVE CONTROL:	1) Cat. No. 1303 - Human Brain Tissue Lysate
IMMUNOGEN:	FBL2 antibody was raised against a 13 amino acid synthetic peptide near the N-Terminus of FBL2.
HOST SPECIES:	Goat

Properties

PURIFICATION:	FBL2 antibody was purified from goat serum by ammonium sulphate precipitation followed by antigen affinity chromatography using the immunizing peptide.
PHYSICAL STATE:	Liquid
BUFFER:	FBL2 antibody is supplied in Tris saline, 0.02% sodium azide, pH 7.3 with 0.5% bovine serum albumin.
CONCENTRATION:	500 ug/mL
STORAGE CONDITIONS:	Aliquot and store at -20°C. Minimize freezing and thawing.
CLONALITY:	Polyclonal
CONJUGATE:	Unconjugated

Additional Info

ALTERNATE NAMES:	FBXL2, F-box and leucine-rich repeat protein 2, FBL2, FBL3, DKFZP564P0622, F-box protein containing leucine-rich repeats
ACCESSION NO.:	NP_036289.2
PROTEIN GI NO.:	16306582

OFFICIAL SYMBOL: FBXL2

GENE ID: 25827

Background

REFERENCES: 1) Ilyin GP, Rialland M, Pigeon C, Guguén-Guillouzo C. cDNA cloning and expression analysis of new members of the mammalian F-box protein family. Genomics. 2000 Jul 1;67(1):40-7.

FOR RESEARCH USE ONLY

December 13, 2016