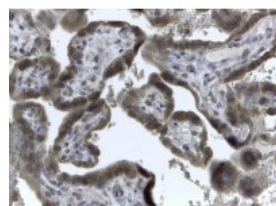




EVC2 Antibody

CATALOG NUMBER: 45-555



Immunohistochemistry (2ug/ml) staining of
paraffin embedded Human Placenta.
Steamed antigen retrieval with citrate
buffer pH 6, HRP-staining.

Specifications

SPECIES REACTIVITY:	Human
TESTED APPLICATIONS:	ELISA, IHC-P
APPLICATIONS:	ELISA: antibody detection limit dilution 1:16000. Western Blot: Consistent band observed in 293 and human heart at approx 75kDa with 1 hour incubation of primary at 0.5ug/ml. Immunohistochemistry: In paraffin embedded Human Placenta shows strong staining of the cytotrophoblasts. Recommended concentration, 2-4ug/ml.
SPECIFICITY:	This antibody is expected to recognise isoform 1 (NP_667338.3) and isoform 2 (NP_001159608.1).
IMMUNOGEN:	EVC2 antibody was raised against a 13 amino acid synthetic peptide near the C-Terminus of EVC2.
HOST SPECIES:	Goat

Properties

PURIFICATION:	EVC2 antibody was purified from goat serum by ammonium sulphate precipitation followed by antigen affinity chromatography using the immunizing peptide.
PHYSICAL STATE:	Liquid
BUFFER:	EVC2 antibody is supplied in Tris saline, 0.02% sodium azide, pH 7.3 with 0.5% bovine serum albumin.
CONCENTRATION:	500 ug/mL
STORAGE CONDITIONS:	Aliquot and store at -20°C. Minimize freezing and thawing.
CLONALITY:	Polyclonal
CONJUGATE:	Unconjugated

Additional Info

ALTERNATE NAMES:	EVC2, LBN, LIMBIN, Ellis van Creveld syndrome 2 (limbin), limbin
ACCESSION NO.:	NP_667338
PROTEIN GI NO.:	93277096
OFFICIAL SYMBOL:	EVC2
GENE ID:	132884

Background

REFERENCES: 1) Takeda H, Takami M, Oguni T, Tsuji T, Yoneda K, Sato H, Ihara N, Itoh T, Kata SR, Mishina Y, Womack JE, Moritomo Y, Sugimoto Y, Kunieda T. Positional cloning of the gene LIMBIN responsible for bovine chondrodysplastic dwarfism. *Proc Natl Acad Sci USA*. 2002 Aug 6;99(16):10549-54.

FOR RESEARCH USE ONLY

December 13, 2016