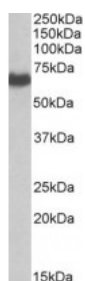


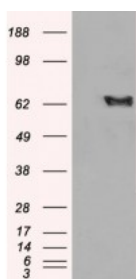


## EHD2 Antibody

CATALOG NUMBER: 45-523



Western Blot (0.1ug/ml) staining of Human Placenta lysate (35ug protein in RIPA buffer). Primary incubation was 1 hour. Detected by chemiluminescence.chemiluminescence.



HEK293 overexpressing EHD2 and probed with antibody (mock transfection in first lane).

### Specifications

|                             |  |
|-----------------------------|--|
| <b>SPECIES REACTIVITY:</b>  | Human  |
| <b>TESTED APPLICATIONS:</b> | ELISA, WB  |
| <b>APPLICATIONS:</b>        | ELISA: antibody detection limit dilution 1:64000. Western Blot: Approx 65kDa band observed in Human Placenta lysates (calculated MW of 61.2kDa according to NP_055416.2). In transfected HEK293 transiently expressing EHD2 a band of approx. 62kDa is observed. This band is not observed in the non-transfecte |
| <b>POSITIVE CONTROL:</b>    | 1) Cat. No. 1301 - Human Heart Tissue Lysate   |
| <b>SPECIFICITY:</b>         | This antibody is expected to recognise EHD1 protein as well as EHD2.   |
| <b>IMMUNOGEN:</b>           | EHD2 antibody was raised against a 15 amino acid synthetic peptide near the C-Terminus of EHD2.  |
| <b>HOST SPECIES:</b>        | Goat   |

### Properties

|                            |   |
|----------------------------|---|
| <b>PURIFICATION:</b>       | EHD2 antibody was purified from goat serum by ammonium sulphate precipitation followed by antigen affinity chromatography using the immunizing peptide. |
| <b>PHYSICAL STATE:</b>     | Liquid  |
| <b>BUFFER:</b>             | EHD2 antibody is supplied in Tris saline, 0.02% sodium azide, pH 7.3 with 0.5% bovine serum albumin.  |
| <b>CONCENTRATION:</b>      | 500 ug/mL   |
| <b>STORAGE CONDITIONS:</b> | Aliquot and store at -20°C. Minimize freezing and thawing.  |
| <b>CLONALITY:</b>          | Polyclonal  |
| <b>CONJUGATE:</b>          | Unconjugated  |

### Additional Info

|                         |   |
|-------------------------|---|
| <b>ALTERNATE NAMES:</b> | EHD2, PAST2, EH-domain containing 2, EH domain containing 2 |
| <b>ACCESSION NO.:</b>   | NP_055416   |
| <b>PROTEIN GI NO.:</b>  | 21361462  |

**OFFICIAL SYMBOL:** EHD2

**GENE ID:** 30846

### Background

**REFERENCES:** 1) Guilherme A, Soriano NA, Furcinitti PS, Czech MP. Role of EHD1 and EHBP1 in perinuclear sorting and insulin-regulated GLUT4 recycling in 3T3-L1 adipocytes. J Biol Chem. 2004 Sep 17;279(38):40062-75. Epub 2004 Jul 09.

**FOR RESEARCH USE ONLY**

December 13, 2016