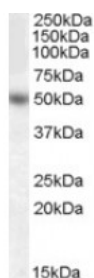




## EGR4 Antibody

CATALOG NUMBER: 45-522



Western Blot (0.3ug/ml) staining of Human Brain (Hippocampus) lysate (35ug protein in RIPA buffer). Primary incubation was 1 hour. Detected by chemiluminescence.

### Specifications

<b>SPECIES REACTIVITY:</b>	Human
<b>TESTED APPLICATIONS:</b>	ELISA, WB
<b>APPLICATIONS:</b>	ELISA: antibody detection limit dilution 1:4000. Western Blot: Approx 50kDa band observed in Human Brain (Cerebellum and Frontal Cortex) lysates (calculated MW of 50.8kDa according to NP_001956.2). Recommended concentration: 0.3-1ug/ml.
<b>POSITIVE CONTROL:</b>	1) Cat. No. XBL-10110 - Human Hippocampus Tissue Lysate
<b>IMMUNOGEN:</b>	EGR4 antibody was raised against a 13 amino acid synthetic peptide near the internal region of EGR4.
<b>HOST SPECIES:</b>	Goat

### Properties

<b>PURIFICATION:</b>	EGR4 antibody was purified from goat serum by ammonium sulphate precipitation followed by antigen affinity chromatography using the immunizing peptide.
<b>PHYSICAL STATE:</b>	Liquid
<b>BUFFER:</b>	EGR4 antibody is supplied in Tris saline, 0.02% sodium azide, pH 7.3 with 0.5% bovine serum albumin.
<b>CONCENTRATION:</b>	500 ug/mL
<b>STORAGE CONDITIONS:</b>	Aliquot and store at -20°C. Minimize freezing and thawing.
<b>CLONALITY:</b>	Polyclonal
<b>CONJUGATE:</b>	Unconjugated

### Additional Info

<b>ALTERNATE NAMES:</b>	EGR4, early growth response 4, NGFI-C, NGFIC, PAT133
<b>ACCESSION NO.:</b>	NP_001956.2
<b>PROTEIN GI NO.:</b>	145301592
<b>OFFICIAL SYMBOL:</b>	EGR4
<b>GENE ID:</b>	1961

## Background

**REFERENCES:** 1) Uvarov P, Ludwig A, Markkanen M, Rivera C, Airaksinen MS. Upregulation of the neuron-specific K<sup>+</sup>/Cl<sup>-</sup> cotransporter expression by transcription factor early growth response 4. J Neurosci. 2006 Dec 27;26(52):13463-73.

---

**FOR RESEARCH USE ONLY**

December 13, 2016