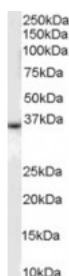


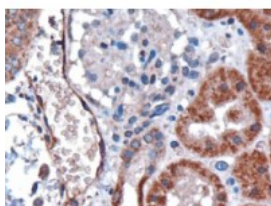


Duffy Antibody

CATALOG NUMBER: 45-502



Western Blot (0.1ug/ml) staining of human liver lysate (35ug protein in RIPA buffer). Primary incubation was 1 hour. Detected by chemiluminescence.



Immunohistochemistry (3ug/ml) staining of paraffin embedded human kidney. Microwaved antigen retrieval with citrate buffer pH 6, HRP-staining.

Specifications

SPECIES REACTIVITY:	Human
TESTED APPLICATIONS:	ELISA, IHC-P, WB
APPLICATIONS:	ELISA: antibody detection limit dilution 1:16000. Western Blot: Approx 35kDa band observed in human kidney and human liver lysates (calculated MW of 35.6kDa according to NP_002027.2). Recommended concentration: 0.1-0.3ug/ml. Immunohistochemistry: In paraffin embedded human kidney stains epithelial cells of renal tubules and endothelial cells of vessels. The granular staining is compatible with the endoplasmic reticulum association of the protein. This antibody has also been Flow cytometry: A customer has reported successful staining of HEK293S-TetR transfected with DARC receptor at a dilution of 1/1000.
POSITIVE CONTROL:	1) Cat. No. 1304 - Human Liver Tissue Lysate 2) Cat. No. 1305 - Human Kidney Tissue Lysate
SPECIFICITY:	This antibody is expected to recognize both reported isoforms (NP_001116423.1; NP_002027.2).
IMMUNOGEN:	Duffy antibody was raised against a 19 amino acid synthetic peptide near the N-Terminus of Duffy.
HOST SPECIES:	Goat

Properties

PURIFICATION:	Duffy antibody was purified from goat serum by ammonium sulphate precipitation followed by antigen affinity chromatography using the immunizing peptide.
PHYSICAL STATE:	Liquid
BUFFER:	Duffy antibody is supplied in Tris saline, 0.02% sodium azide, pH 7.3 with 0.5% bovine serum albumin.
CONCENTRATION:	500 ug/mL
STORAGE CONDITIONS:	Aliquot and store at -20°C. Minimize freezing and thawing.
CLONALITY:	Polyclonal
CONJUGATE:	Unconjugated

Additional Info

ALTERNATE NAMES:	FY, Duffy blood group, HGNC:4035, CCBP1, DARC, GPD, CTA-134P22.3, CD234, FY,
-------------------------	--

OTTHUMP00000060081, chemokine receptor, Duffy blood group antigen, Glycoprotein D, ACKR1

ACCESSION NO.: NP_002027.2

PROTEIN GI NO.: 42822887

OFFICIAL SYMBOL: DARC

GENE ID: 2532

Background

REFERENCES: 1) Bruhl H, Vielhauer V, Weiss M, Mack M, Schlondorff D, Segerer S. Expression of DARC, CXCR3 and CCR5 in giant cell arteritis. Rheumatology (Oxford). 2005 Mar;44(3):309-13. Epub 2004 Nov 30.

FOR RESEARCH USE ONLY

December 13, 2016