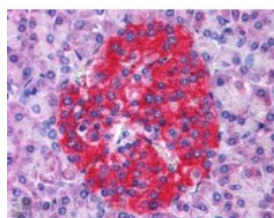




Annexin A10 Antibody

CATALOG NUMBER: 45-255



Immunohistochemistry (3.8ug/ml) staining
of paraffin embedded Human Pancreas.
Steamed antigen retrieval with citrate
buffer pH 6, AP-staining.

Specifications

SPECIES REACTIVITY:	Human
TESTED APPLICATIONS:	ELISA, IHC-P
APPLICATIONS:	ELISA: antibody detection limit dilution 1:8000. Western Blot: Preliminary experiments (at 1ug/ml) gave an approx 45-48kDa band in Hela, A431 and Human Kidney lysates. Please note that currently we cannot find an explanation in the literature for the band we observe given the predicted size of approx. Immunohistochemistry: In paraffin embedded Human Pancreas shows staining of islet of Langerhans . Recommended concentration, 3-5ug/ml.
POSITIVE CONTROL:	1) Cat. No. 1307 - Human Pancreas Tissue Lysate 2) Cat. No. 11-101 - Human Pancreas Tissue Slide
IMMUNOGEN:	Annexin A10 antibody was raised against a 15 amino acid synthetic peptide near the N-Terminus of Annexin A10.
HOST SPECIES:	Goat

Properties

PURIFICATION:	Annexin A10 antibody was purified from goat serum by ammonium sulphate precipitation followed by antigen affinity chromatography using the immunizing peptide.
PHYSICAL STATE:	Liquid
BUFFER:	Annexin A10 antibody is supplied in Tris saline, 0.02% sodium azide, pH 7.3 with 0.5% bovine serum albumin.
CONCENTRATION:	500 ug/mL
STORAGE CONDITIONS:	Aliquot and store at -20°C. Minimize freezing and thawing.
CLONALITY:	Polyclonal
CONJUGATE:	Unconjugated

Additional Info

ALTERNATE NAMES:	ANXA10, annexin A10, ANX14, annexin 14
ACCESSION NO.:	NP_009124

PROTEIN GI NO.: 48762937

OFFICIAL SYMBOL: ANXA10

GENE ID: 11199

Background

REFERENCES: 1) Morgan RO, Jenkins NA, Gilbert DJ, Copeland NG, Balsara BR, Testa JR, Fernandez MP. Novel human and mouse annexin A10 are linked to the genome duplications during early chordate evolution. Genomics. 1999 Aug 15;60(1):40-9.

FOR RESEARCH USE ONLY

December 13, 2016