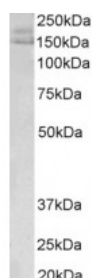




AKAP12 Antibody

CATALOG NUMBER: 45-229



Western Blot (0.02ug/ml) staining of Human Uterus lysate (35ug protein in RIPA buffer). Primary incubation was 1 hour. Detected by chemiluminescence.

Specifications

SPECIES REACTIVITY:	Human
TESTED APPLICATIONS:	ELISA, WB
APPLICATIONS:	ELISA: antibody detection limit dilution 1:32000. Western Blot: Approx 200+150kDa bands observed in Human Uterus lysates (calculated MW of 191kDa according to NP_005091.2 and 181kDa according to NP_653080.1). Recommended concentration: 0.02-0.1ug/ml.
POSITIVE CONTROL:	1) Cat. No. 1201 - HeLa Cell Lysate
SPECIFICITY:	This antibody is expected to recognize both reported isoforms.
IMMUNOGEN:	AKAP12 antibody was raised against a synthetic peptide of AKAP12.
HOST SPECIES:	Goat

Properties

PURIFICATION:	AKAP12 antibody was purified from goat serum by ammonium sulphate precipitation followed by antigen affinity chromatography using the immunizing peptide.
PHYSICAL STATE:	Liquid
BUFFER:	AKAP12 antibody is supplied in Tris saline, 0.02% sodium azide, pH 7.3 with 0.5% bovine serum albumin.
CONCENTRATION:	500 ug/mL
STORAGE CONDITIONS:	Aliquot and store at -20°C. Minimize freezing and thawing.
CLONALITY:	Polyclonal
CONJUGATE:	Unconjugated

Additional Info

ALTERNATE NAMES:	AKAP12, A kinase (PRKA) anchor protein (gravin) 12, GRAVIN, AKAP250, kinase scaffold protein gravin, A kinase (PRKA) anchor protein 12, DKFZp686M0430, DKFZp686O0331
ACCESSION NO.:	NP_005091.2, NP_653080.1
PROTEIN GI NO.:	21493022

OFFICIAL SYMBOL: AKAP12

GENE ID: 9590

Background

REFERENCES: 1) Nauert JB, Klauck TM, Langeberg LK, Scott JD. Gravin, an autoantigen recognized by serum from myasthenia gravis patients, is a kinase scaffold protein. Curr Biol. 1997 Jan 1;7(1):52-62.

FOR RESEARCH USE ONLY

December 13, 2016