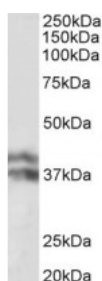


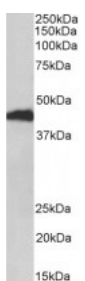


## HP Antibody

CATALOG NUMBER: 42-911



Western Blot (0.1ug/ml) staining of Human Liver lysate (35ug protein in RIPA buffer). Primary incubation was 1 hour. Detected by chemiluminescence.



Western Blot (1ug/ml) staining of Pig Liver lysate (35ug protein in RIPA buffer). Primary incubation was 1 hour. Detected by chemiluminescence.

### Specifications

<b>SPECIES REACTIVITY:</b>	Human, Pig
<b>TESTED APPLICATIONS:</b>	ELISA, WB
<b>APPLICATIONS:</b>	ELISA: antibody detection limit dilution 1:8000. Western Blot: Approx 37+40kDa bands observed in Human Liver lysates and 40kDa in Pig Liver lysates (calculated MW of 45.2kDa according to NP_005134.1 and 38.5kDa according to NP_001119574.1). Recommended concentration: 0.1-0.3ug/ml.
<b>POSITIVE CONTROL:</b>	1) Cat. No. 1304 - Human Liver Tissue Lysate
<b>PREDICTED MOLECULAR WEIGHT:</b>	Approx 37+ 40 kDa
<b>SPECIFICITY:</b>	This antibody is expected to recognize both reported isoforms (NP_005134.1; NP_001119574.1).
<b>IMMUNOGEN:</b>	HP Antibody was raised against a 12 amino acid sequence near the internal region of HP.
<b>HOST SPECIES:</b>	Goat

### Properties

<b>PURIFICATION:</b>	Antibody was purified from goat serum by ammonium sulphate precipitation followed by antigen affinity chromatography using the immunizing peptide.
<b>PHYSICAL STATE:</b>	Liquid
<b>BUFFER:</b>	HP antibody is supplied in Tris saline, 0.02% sodium azide, pH 7.3 with 0.5% bovine serum albumin.
<b>CONCENTRATION:</b>	500 ug/mL
<b>STORAGE CONDITIONS:</b>	Aliquot and store at -20°C. Minimize freezing and thawing.
<b>CLONALITY:</b>	Polyclonal
<b>CONJUGATE:</b>	Unconjugated

### Additional Info

<b>ALTERNATE NAMES:</b>	HP, MGC111141, HPA1S, HP2ALPHA2, haptoglobin, beta polypeptide, alpha polypeptide, haptoglobin alpha(2FS)-beta, haptoglobin alpha(1S)-beta, BP, binding peptide
<b>ACCESSION NO.:</b>	NP_005134.1, NP_001119574.1

PROTEIN GI NO.:	4826762
OFFICIAL SYMBOL:	HP
GENE ID:	3240

## Background

FOR RESEARCH USE ONLY

December 13, 2016