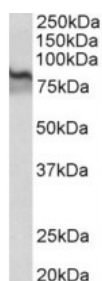




TGM2 Antibody

CATALOG NUMBER: 42-882



Western Blot (1ug/ml) staining of Mouse
Kidney lysate (35ug protein in RIPA
buffer). Primary incubation was 1 hour.
Detected by chemiluminescence.

Specifications

SPECIES REACTIVITY:	Mouse, Rat
TESTED APPLICATIONS:	ELISA, WB
APPLICATIONS:	ELISA: antibody detection limit dilution 1:8000. Western Blot: Approx 80kDa band observed in Mouse and Rat Kidney lysates (calculated MW of 77.3kDa according to Human NP_004604.2 and 77.0kDa according to Mouse NP_033399.1). Recommended concentration: 1-3ug/ml.
POSITIVE CONTROL:	1) Cat. No. 1405 - Mouse Kidney Tissue Lysate 2) Cat. No. 1465 - Rat Kidney Tissue Lysate
PREDICTED MOLECULAR WEIGHT:	Approx 80 kDa
SPECIFICITY:	This antibody is expected to recognize isoform a (NP_004604.2) only.
IMMUNOGEN:	TGM2 Antibody was raised against a 14 amino acid sequence near the internal region of TGM2 (aa578-591).
HOST SPECIES:	Goat

Properties

PURIFICATION:	Antibody was purified from goat serum by ammonium sulphate precipitation followed by antigen affinity chromatography using the immunizing peptide.
PHYSICAL STATE:	Liquid
BUFFER:	TGM2 antibody is supplied in Tris saline, 0.02% sodium azide, pH 7.3 with 0.5% bovine serum albumin.
CONCENTRATION:	500 ug/mL
STORAGE CONDITIONS:	Aliquot and store at -20°C. Minimize freezing and thawing.
CLONALITY:	Polyclonal
CONJUGATE:	Unconjugated

Additional Info

ALTERNATE NAMES:	TGM2, transglutaminase-2, transglutaminase H, transglutaminase C, transglutaminase 2 (C polypeptide, protein-glutamine-gamma-glutamyltransferase), tissue transglutaminase, TGC, TGase-H, TGase-2, TGase H, TGase
-------------------------	---

C, TG2, TG(C), protein-glutamine-gamma-glutamyltransferase, protein-glutamine gamma-glutamyltransferase 2, GNAH, G-ALPHA-h, C polypeptide, HEL-S-45

ACCESSION NO.: NP_004604.2

PROTEIN GI NO.: 39777597

OFFICIAL SYMBOL: TGM2

GENE ID: 7052

Background

FOR RESEARCH USE ONLY

December 13, 2016