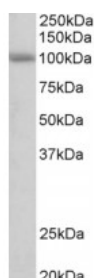


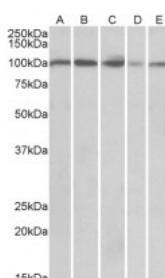


## SIDT1 Antibody

CATALOG NUMBER: 42-866



Western Blot (0.3ug/ml) staining of Human Cerebellum lysate (35ug protein in RIPA buffer). Primary incubation was 1 hour. Detected by chemiluminescence.



Western Blot (0.3ug/ml) staining of Human Spleen (A), Human Thymus (B), Mouse Spleen (C), Mouse Thymus (D) and Rat Thymus (E) lysates (35ug protein in RIPA buffer). Primary incubation was 1 hour. Detected by chemiluminescence.

### Specifications

<b>SPECIES REACTIVITY:</b>	Human, Mouse, Rat
<b>TESTED APPLICATIONS:</b>	ELISA, WB
<b>APPLICATIONS:</b>	ELISA: antibody detection limit dilution 1:32000. Western Blot: Approx 100kDa band observed in Human Brain (Cerebellum) lysates and in Human, Mouse and Rat lymphoid tissues (calculated MW of 93.8kDa according to NP_060169.2). Recommended concentration: 0.3-1ug/ml.
<b>POSITIVE CONTROL:</b>	1) Cat. No. 1362 - Human Cerebellum, Left Lysate Cat. No. 1363 - Human Cerebellum, Right Lysate
<b>IMMUNOGEN:</b>	SIDT1 antibody was raised against a 14 amino acid synthetic peptide near the internal region of SIDT1 (aa 334-347).
<b>HOST SPECIES:</b>	Goat

### Properties

<b>PURIFICATION:</b>	Antibody was purified from goat serum by ammonium sulphate precipitation followed by antigen affinity chromatography using the immunizing peptide.
<b>PHYSICAL STATE:</b>	Liquid
<b>BUFFER:</b>	SIDT1 antibody is supplied in Tris saline, 0.02% sodium azide, pH 7.3 with 0.5% bovine serum albumin.
<b>CONCENTRATION:</b>	500 ug/mL
<b>STORAGE CONDITIONS:</b>	Aliquot and store at -20°C. Minimize freezing and thawing.
<b>CLONALITY:</b>	Polyclonal
<b>CONJUGATE:</b>	Unconjugated

### Additional Info

<b>ALTERNATE NAMES:</b>	SIDT1, SID1 transmembrane family, member 1, SID1 transmembrane family member 1, SID-1, SID1, FLJ20174, B830021E24Rik
-------------------------	--

ACCESSION NO.: NP\_060169.2

PROTEIN GI NO.: 116812584

OFFICIAL SYMBOL: SIDT1

GENE ID: 54847

## Background

FOR RESEARCH USE ONLY

December 13, 2016