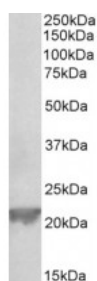




Gpx1 Antibody

CATALOG NUMBER: 43-087



Western Blot (0.3ug/ml) staining of Rat Liver lysate (35ug protein in RIPA buffer). Primary incubation was 1 hour. Detected by chemiluminescence.

Specifications

SPECIES REACTIVITY:	Mouse, Rat
TESTED APPLICATIONS:	ELISA, WB
APPLICATIONS:	ELISA: antibody detection limit dilution 1:64000. Western Blot: Approx 22kDa band observed in Mouse and Rat Kidney and Liver lysates (calculated MW of 22.3kDa according to NP_032186.2). Recommended concentration: 0.3-1ug/ml.
POSITIVE CONTROL:	1) Cat. No. 1464 - Rat Liver Tissue Lysate
PREDICTED MOLECULAR WEIGHT:	Approx 22 kDa
IMMUNOGEN:	Gpx1 antibody was raised against a 11 amino acid peptide near the internal region (near N Terminus) of Gpx1 (mouse, rat).
HOST SPECIES:	Goat

Properties

PURIFICATION:	Gpx1 antibody was purified from goat serum by ammonium sulphate precipitation followed by antigen affinity chromatography using the immunizing peptide.
PHYSICAL STATE:	Liquid
BUFFER:	Gpx1 antibody is supplied in Tris saline, 0.02% sodium azide, pH 7.3 with 0.5% bovine serum albumin.
CONCENTRATION:	500 ug/mL
STORAGE CONDITIONS:	Aliquot and store at -20°C. Minimize freezing and thawing.
CLONALITY:	Polyclonal
CONJUGATE:	Unconjugated

Additional Info

ALTERNATE NAMES:	AI195024, AL033363, cellular glutathione peroxidase, CGPx, glutathione peroxidase 1, Gpx, Gpx1, GPx-1, GSHPx-1, GSHPx-1, AI195024
ACCESSION NO.:	NP_032186.2

PROTEIN GI NO.: 84871986

OFFICIAL SYMBOL: Gpx1

GENE ID: 14775 (mouse); 24404 (rat);

Background

FOR RESEARCH USE ONLY

December 13, 2016