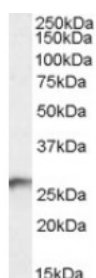


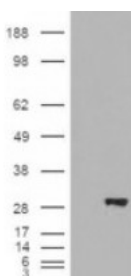


BDH2 Antibody

CATALOG NUMBER: 46-632



Western blot analysis of BDH2 in human kidney lysate (35 ug protein in RIPA buffer) using BDH2 Antibody at 0.3 ug/mL.



HEK293 overexpressing BDH2 and probed with BDH2 antibody (mock transfection in first lane).

Specifications

SPECIES REACTIVITY:	Human
TESTED APPLICATIONS:	ELISA, WB
APPLICATIONS:	ELISA: Antibody detection limit dilution 1:64,000. Western Blot: Approximately 26 kDa band observed in human cerebellum, kidney and liver lysates (calculated MW of 26.7 kDa according to NP_064524.3). Recommended concentration: 0.3-1 ug/mL.
POSITIVE CONTROL:	1) Cat. No. 1305 - Human Kidney Tissue Lysate
IMMUNOGEN:	BDH2 antibody was raised against a 12 amino acid synthetic peptide near the internal region of BDH2.
HOST SPECIES:	Goat

Properties

PURIFICATION:	BDH2 antibody was purified from goat serum by ammonium sulphate precipitation followed by antigen affinity chromatography using the immunizing peptide.
PHYSICAL STATE:	Liquid
BUFFER:	BDH2 antibody is supplied in Tris saline, 0.02% sodium azide, pH 7.3 with 0.5% bovine serum albumin.
CONCENTRATION:	500 ug/mL
STORAGE CONDITIONS:	Aliquot and store at -20°C. Minimize freezing and thawing.
CLONALITY:	Polyclonal
CONJUGATE:	Unconjugated

Additional Info

ALTERNATE NAMES:	BDH2, 3-hydroxybutyrate dehydrogenase, type 2, DHRS6, EFA6R, FLJ13261, PRO20933, UCPA-OR, UNQ6308, dehydrogenase/reductase (SDR family) member 6, oxidoreductase UCPA, UNQ6308/PRO20933
ACCESSION NO.:	NP_064524.3
PROTEIN GI NO.:	66933014
OFFICIAL SYMBOL:	BDH2
GENE ID:	56898

Background

REFERENCES: 1) Guo K, Lukacik P, Papagrigoriou E, Meier M, Lee WH, Adamski J, Oppermann U. Characterization of human DHRS6, an orphan short chain dehydrogenase/reductase enzyme: a novel, cytosolic type 2 R-beta-hydroxybutyrate dehydrogenase. J Biol Chem. 2006 Apr 14;281(15):10291-7. Epub 2005 Dec 27.

FOR RESEARCH USE ONLY

December 13, 2016