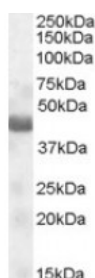




TUSC4 Antibody

CATALOG NUMBER: 46-539



Western blot analysis of TUSC4 in human skeletal muscle lysate (35 ug protein in RIPA buffer) using TUSC4 Antibody at 0.1 ug/mL.

Specifications

SPECIES REACTIVITY:	Human
TESTED APPLICATIONS:	ELISA, WB
APPLICATIONS:	ELISA: Antibody detection limit dilution 1:32,000. Western Blot: Approximately 45 kDa band observed in human muscle lysates (calculated MW of 43.7 kDa according to NP_006536.3). Recommended concentration :0. 1-0.3 ug/mL.
POSITIVE CONTROL:	1) Cat. No. 1375 - Human Skeletal Muscle Tissue Lysate
IMMUNOGEN:	TUSC4 antibody was raised against a 12 amino acid synthetic peptide near the internal region of TUSC4 (aa 140-151).
HOST SPECIES:	Goat

Properties

PURIFICATION:	TUSC4 antibody was purified from goat serum by ammonium sulphate precipitation followed by antigen affinity chromatography using the immunizing peptide.
PHYSICAL STATE:	Liquid
BUFFER:	TUSC4 antibody is supplied in Tris saline, 0.02% sodium azide, pH 7.3 with 0.5% bovine serum albumin.
CONCENTRATION:	500 ug/mL
STORAGE CONDITIONS:	Aliquot and store at -20°C. Minimize freezing and thawing.
CLONALITY:	Polyclonal
CONJUGATE:	Unconjugated

Additional Info

ALTERNATE NAMES:	TUSC4, tumor suppressor candidate 4, NPR2L, NPRL2, 2810446G01Rik, homologous to yeast nitrogen permease (candidate tumor suppressor), TUSC4
ACCESSION NO.:	NP_006536.3
PROTEIN GI NO.:	50592992
OFFICIAL SYMBOL:	TUSC4

GENE ID: 10641

Background

REFERENCES: 1) Ueda K, Kawashima H, Ohtani S, Deng WG, Ravoori M, Bankson J, Gao B, Girard L, Minna JD, Roth JA, Kundra V, Ji L. The 3p21.3 tumor suppressor NPRL2 plays an important role in cisplatin-induced resistance in human non-small-cell lung cancer cells. *Cancer Res.* 2006 Oct 1;66(19):9682-90.

FOR RESEARCH USE ONLY

December 13, 2016