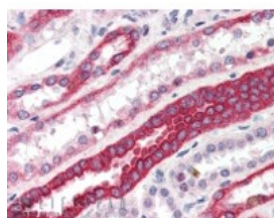




RFI Antibody

CATALOG NUMBER: 46-283



Immunohistochemistry staining of RFI in human kidney using RFI Antibody at 3.8 ug/mL.

Specifications

SPECIES REACTIVITY:	Human
TESTED APPLICATIONS:	ELISA, IHC
APPLICATIONS:	ELISA: Antibody detection limit dilution 1:32000. Western Blot: No signal obtained yet but low background observed in human testis lysate at up to 1 ug/mL. Immunohistochemistry: In paraffin embedded human kidney shows strong staining of cytoplasm in DCT. Recommended concentration, 3-5 ug/mL.
POSITIVE CONTROL:	1) Cat. No. 1305 - Human Kidney Tissue Lysate 2) Cat. No. 10-401 - Human Kidney Tissue Slide
SPECIFICITY:	This antibody is expected to recognize both reported isoforms (NP_919247.1 and NP_079402.2).
IMMUNOGEN:	RFI antibody was raised against a 12 amino acid synthetic peptide near the N-Terminus of RFI.
HOST SPECIES:	Goat

Properties

PURIFICATION:	RFI antibody was purified from goat serum by ammonium sulphate precipitation followed by antigen affinity chromatography using the immunizing peptide.
PHYSICAL STATE:	Liquid
BUFFER:	RFI antibody is supplied in Tris saline, 0.02% sodium azide, pH 7.3 with 0.5% bovine serum albumin.
CONCENTRATION:	500 ug/mL
STORAGE CONDITIONS:	Aliquot and store at -20°C. Minimize freezing and thawing.
CLONALITY:	Polyclonal
CONJUGATE:	Unconjugated

Additional Info

ALTERNATE NAMES:	RNF34, ring finger protein 34, RFI, RIF, RIFF, FLJ21786, RING finger protein RIFF, FYVE-RING finger protein MOMO, hRFI, CARP1, CARP-1
ACCESSION NO.:	NP_919247.1, NP_079402.2
PROTEIN GI NO.:	37595539

OFFICIAL SYMBOL: RNF34

GENE ID: 80196

Background

REFERENCES: 1) Sasaki S, Nakamura T, Arakawa H, Mori M, Watanabe T, Nagawa H, Croce CM. Isolation and characterization of a novel gene, hRFI, preferentially expressed in esophageal cancer. *Oncogene*. 2002 Jul 25;21(32):5024-30.

FOR RESEARCH USE ONLY

December 13, 2016