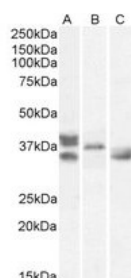


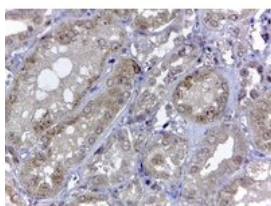


## Renalase Antibody

CATALOG NUMBER: 46-278



Western Blot (0.5 ug/ml) staining of Mouse Heart (A) and Rat Heart (B) lysates (35ug protein in RIPA buffer). Primary incubation was 1 hour. Detected by chemiluminescence.



Immunohistochemistry (2ug/ml) staining of paraffin embedded Human Kidney. Steamed antigen retrieval with citrate buffer pH 6, HRP-staining.

### Specifications

<b>SPECIES REACTIVITY:</b>	Human, Mouse
<b>TESTED APPLICATIONS:</b>	ELISA, IHC-P, WB
<b>APPLICATIONS:</b>	ELISA: antibody detection limit dilution 1:64000. Western Blot: Approx 37kDa band observed in Human Kidney and Mouse Kidney lysates (calculated MW of 37.8kDa according to NP_001026879.1 and 34.9kDa according to NP_060833.1). Recommended concentration: 0.1-0.3ug/ml. Immunohistochemistry: In paraffin embedded Human Kidney shows vesicular staining in the epithelial cells of the CT. Recommended concentration, 2-4ug/ml.
<b>POSITIVE CONTROL:</b>	1) Cat. No. 1305 - Human Kidney Tissue Lysate
<b>SPECIFICITY:</b>	This antibody is expected to recognise both reported isoforms (NP_001026879.2 and NP_060833.1).
<b>IMMUNOGEN:</b>	Renalase antibody was raised against a 10 amino acid synthetic peptide near the internal region of Renalase (aa 224-233).
<b>HOST SPECIES:</b>	Goat

### Properties

<b>PURIFICATION:</b>	Renalase antibody was purified from goat serum by ammonium sulphate precipitation followed by antigen affinity chromatography using the immunizing peptide.
<b>PHYSICAL STATE:</b>	Liquid
<b>BUFFER:</b>	Renalase antibody is supplied in Tris saline, 0.02% sodium azide, pH 7.3 with 0.5% bovine serum albumin.
<b>CONCENTRATION:</b>	500 ug/mL
<b>STORAGE CONDITIONS:</b>	Aliquot and store at -20°C. Minimize freezing and thawing.
<b>CLONALITY:</b>	Polyclonal
<b>CONJUGATE:</b>	Unconjugated

### Additional Info

<b>ALTERNATE NAMES:</b>	C10orf59, chromosome 10 open reading frame 59, HGNC:25641, FLJ11218, hypothetical protein LOC55328, renalase, C10orf59
-------------------------	--

**ACCESSION NO.:** NP\_001026879.1, NP\_060833.1

**PROTEIN GI NO.:** 72534708

**OFFICIAL SYMBOL:** RNLS

**GENE ID:** 55328

### Background

**REFERENCES:** 1) Xu J, Li G, Wang P, Velazquez H, Yao X, Li Y, Wu Y, Peixoto A, Crowley S, Desir GV. Renalase is a novel, soluble monoamine oxidase that regulates cardiac function and blood pressure. J Clin Invest. 2005 May 2;115(5):1275-1280. Epub 2005 Apr 7.

**FOR RESEARCH USE ONLY**

December 13, 2016