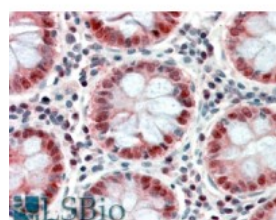




PTCH Antibody

CATALOG NUMBER: 46-245



Immunohistochemistry (3.8ug/ml) staining
of paraffin embedded Human Colon.
Steamed antigen retrieval with citrate
buffer pH 6, AP-staining.

Specifications

SPECIES REACTIVITY:	Human
TESTED APPLICATIONS:	ELISA, IHC-P
APPLICATIONS:	ELISA: antibody detection limit dilution 1:8000. Immunohistochemistry: In paraffin embedded Human Colon shows textured nuclear staining of the absorptive cells. This antibody was also reported to be successful on Human glioma sections: Abiria et al, J Neurooncol. 2014 May 28, PMID:24867209 Recommended
SPECIFICITY:	This antibody is expected to recognise all reported isoforms. Variants (NP_001077073.1; NP_001077074.1; NP_001077075.1; NP_001077076.1) encode the same isoform.
IMMUNOGEN:	PTCH antibody was raised against a 12 amino acid synthetic peptide near the C-Terminus of PTCH.
HOST SPECIES:	Goat

Properties

PURIFICATION:	PTCH antibody was purified from goat serum by ammonium sulphate precipitation followed by antigen affinity chromatography using the immunizing peptide.
PHYSICAL STATE:	Liquid
BUFFER:	PTCH antibody is supplied in Tris saline, 0.02% sodium azide, pH 7.3 with 0.5% bovine serum albumin.
CONCENTRATION:	500 ug/mL
STORAGE CONDITIONS:	Aliquot and store at -20°C. Minimize freezing and thawing.
CLONALITY:	Polyclonal
CONJUGATE:	Unconjugated

Additional Info

ALTERNATE NAMES:	PTCH, patched homolog (Drosophila), HGNC:9585, BCNS, HPE7, NBCCS, PTC, PTC1, patched, patched (Drosophila) homolog, PTCH
ACCESSION NO.:	NP_000255.1
PROTEIN GI NO.:	4506247
OFFICIAL SYMBOL:	PTCH1

GENE ID: 5727

Background

REFERENCES: 1) Nagao K, Togawa N, Fujii K, Uchikawa H, Kohno Y, Yamada M, Miyashita T. Detecting tissue-specific alternative splicing and disease-associated aberrant splicing of the PTCH gene with exon junction microarrays. Hum Mol Genet. 2005 Oct 3;

FOR RESEARCH USE ONLY

December 13, 2016