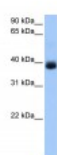




SERPINA5 Antibody

CATALOG NUMBER: 30-877



Antibody used in WB on Human Liver at
0.2-1 ug/ml.

Specifications

SPECIES REACTIVITY:	Human
TESTED APPLICATIONS:	ELISA, WB
APPLICATIONS:	SERPINA5 antibody can be used for detection of SERPINA5 by ELISA at 1:312500. SERPINA5 antibody can be used for detection of SERPINA5 by western blot at 1 ug/mL, and HRP conjugated secondary antibody should be diluted 1:50,000 - 100,000.
USER NOTE:	Optimal dilutions for each application to be determined by the researcher.
POSITIVE CONTROL:	1) Cat. No. XBL-10409 - Fetal Liver Tissue Lysate
PREDICTED MOLECULAR WEIGHT:	45 kDa
IMMUNOGEN:	Antibody produced in rabbits immunized with a synthetic peptide corresponding a region of human SERPINA5.
HOST SPECIES:	Rabbit

Properties

PURIFICATION:	Antibody is purified by peptide affinity chromatography method.
PHYSICAL STATE:	Lyophilized
BUFFER:	Antibody is lyophilized in PBS buffer with 2% sucrose. Add 50 uL of distilled water. Final antibody concentration is 1 mg/mL.
CONCENTRATION:	1 mg/ml
STORAGE CONDITIONS:	For short periods of storage (days) store at 4°C. For longer periods of storage, store SERPINA5 antibody at -20°C. As with any antibody avoid repeat freeze-thaw cycles.
CLONALITY:	Polyclonal
CONJUGATE:	Unconjugated

Additional Info

ALTERNATE NAMES:	SERPINA5, PAI3, PCI, PLANH3, PROCI, PAI-3, PCI-B
ACCESSION NO.:	NP_000615
PROTEIN GI NO.:	194018472

OFFICIAL SYMBOL: SERPINA5

GENE ID: 5104

Background

BACKGROUND: SERPINA5 belongs to the serpin family. It Inhibits activated protein C as well as plasminogen activators.

REFERENCES: 1) Li, W., (2008) Proc. Natl. Acad. Sci. U.S.A. 105 (12), 4661-4666.

FOR RESEARCH USE ONLY

December 12, 2016