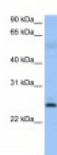




## ROPN1B Antibody

CATALOG NUMBER: 30-769



Antibody used in WB on Human Muscle at  
0.2-1 ug/ml.

### Specifications

<b>SPECIES REACTIVITY:</b>	Human
<b>TESTED APPLICATIONS:</b>	ELISA, WB
<b>APPLICATIONS:</b>	ROPN1B antibody can be used for detection of ROPN1B by ELISA at 1:1562500. ROPN1B antibody can be used for detection of ROPN1B by western blot at 0.5 ug/mL, and HRP conjugated secondary antibody should be diluted 1:50,000 - 100,000.
<b>USER NOTE:</b>	Optimal dilutions for each application to be determined by the researcher.
<b>POSITIVE CONTROL:</b>	1) Cat. No. 1375 - Human Skeletal Muscle Tissue Lysate
<b>PREDICTED MOLECULAR WEIGHT:</b>	24 kDa
<b>IMMUNOGEN:</b>	Antibody produced in rabbits immunized with a synthetic peptide corresponding a region of human ROPN1B.
<b>HOST SPECIES:</b>	Rabbit

### Properties

<b>PURIFICATION:</b>	Antibody is purified by peptide affinity chromatography method.
<b>PHYSICAL STATE:</b>	Lyophilized
<b>BUFFER:</b>	Antibody is lyophilized in PBS buffer with 2% sucrose. Add 50 uL of distilled water. Final antibody concentration is 1 mg/mL.
<b>CONCENTRATION:</b>	1 mg/ml
<b>STORAGE CONDITIONS:</b>	For short periods of storage (days) store at 4°C. For longer periods of storage, store ROPN1B antibody at -20°C. As with any antibody avoid repeat freeze-thaw cycles.
<b>CLONALITY:</b>	Polyclonal
<b>CONJUGATE:</b>	Unconjugated

### Additional Info

<b>ALTERNATE NAMES:</b>	ROPN1B,
<b>ACCESSION NO.:</b>	NP_001012337
<b>PROTEIN GI NO.:</b>	59891409

**OFFICIAL SYMBOL:** ROPN1B

**GENE ID:** 152015

### Background

**BACKGROUND:** ROPN1B belongs to the ropporin family and contains 1 RIIa domain. ROPN1B interacts with RHPN1 and AKAP3. It may interact with SPA17.

**REFERENCES:** 1) Carr, D.W., (2001) J. Biol. Chem. 276 (20), 17332-17338.

**FOR RESEARCH USE ONLY**

December 12, 2016