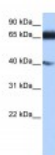




DKFZp686E2433 Antibody

CATALOG NUMBER: 30-761



Antibody used in WB on Human Heart at
0.2-1 ug/ml.

Specifications

SPECIES REACTIVITY:	Human
TESTED APPLICATIONS:	ELISA, WB
APPLICATIONS:	DKFZp686E2433 antibody can be used for detection of DKFZp686E2433 by ELISA at 1:312500. DKFZp686E2433 antibody can be used for detection of DKFZp686E2433 by western blot at 0.5 ug/mL, and HRP conjugated secondary antibody should be diluted 1:50,000 - 100,000.
USER NOTE:	Optimal dilutions for each application to be determined by the researcher.
POSITIVE CONTROL:	1) Cat. No. XBL-10407 - Fetal Heart Tissue Lysate
PREDICTED MOLECULAR WEIGHT:	77 kDa
IMMUNOGEN:	Antibody produced in rabbits immunized with a synthetic peptide corresponding a region of human DKFZp686E2433.
HOST SPECIES:	Rabbit

Properties

PURIFICATION:	Antibody is purified by peptide affinity chromatography method.
PHYSICAL STATE:	Lyophilized
BUFFER:	Antibody is lyophilized in PBS buffer with 2% sucrose. Add 50 uL of distilled water. Final antibody concentration is 1 mg/mL.
CONCENTRATION:	1 mg/ml
STORAGE CONDITIONS:	For short periods of storage (days) store at 4°C. For longer periods of storage, store DKFZp686E2433 antibody at -20°C. As with any antibody avoid repeat freeze-thaw cycles.
CLONALITY:	Polyclonal
CONJUGATE:	Unconjugated

Additional Info

ALTERNATE NAMES:	DKFZp686E2433, DKFZp686E2433
ACCESSION NO.:	XP_293828

PROTEIN GI NO.: 88990082

OFFICIAL SYMBOL: ZNF879

GENE ID: 345462

Background

BACKGROUND: The exact functions of DKFZp686E2433 remain unknown.

FOR RESEARCH USE ONLY

December 12, 2016