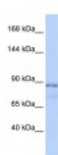




ZFAT1 Antibody

CATALOG NUMBER: 25-105



Antibody used in WB on Human Muscle at
0.2-1 ug/ml.

Specifications

SPECIES REACTIVITY:	Human
TESTED APPLICATIONS:	ELISA, WB
APPLICATIONS:	ZFAT1 antibody can be used for detection of ZFAT1 by ELISA at 1:312500. ZFAT1 antibody can be used for detection of ZFAT1 by western blot at 1 ug/mL, and HRP conjugated secondary antibody should be diluted 1:50,000 - 100,000.
USER NOTE:	Optimal dilutions for each application to be determined by the researcher.
POSITIVE CONTROL:	1) Cat. No. XBL-10413 - Fetal Skeletal Muscle Tissue Lysate
PREDICTED MOLECULAR WEIGHT:	94 kDa
IMMUNOGEN:	Antibody produced in rabbits immunized with a synthetic peptide corresponding a region of human ZFAT1.
HOST SPECIES:	Rabbit

Properties

PURIFICATION:	Antibody is purified by peptide affinity chromatography method.
PHYSICAL STATE:	Lyophilized
BUFFER:	Antibody is lyophilized in PBS buffer with 2% sucrose. Add 50 uL of distilled water. Final antibody concentration is 1 mg/mL.
CONCENTRATION:	1 mg/ml
STORAGE CONDITIONS:	For short periods of storage (days) store at 4°C. For longer periods of storage, store ZFAT1 antibody at -20°C. As with any antibody avoid repeat freeze-thaw cycles.
CLONALITY:	Polyclonal
CONJUGATE:	Unconjugated

Additional Info

ALTERNATE NAMES:	ZFAT1, AITD3, KIAA1485, MGC126815, MGC126817, ZFAT, ZNF406, ZFAT1
ACCESSION NO.:	NP_001025110
PROTEIN GI NO.:	292658775

OFFICIAL SYMBOL: ZFAT

GENE ID: 57623

Background

BACKGROUND: ZFAT1 may be involved in transcriptional regulation. Overexpression of ZFAT1 causes down-regulation of a number of genes involved in the immune response. Some genes are also up-regulated.

REFERENCES: 1) Koyanagi, M., (2008) Genomics 91 (5), 451-457.

FOR RESEARCH USE ONLY

December 12, 2016