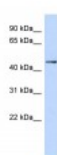




ZNF391 Antibody

CATALOG NUMBER: 25-083



Antibody used in WB on Human Lung at
0.2-1 ug/ml.

Specifications

SPECIES REACTIVITY:	Human
TESTED APPLICATIONS:	ELISA, WB
APPLICATIONS:	ZNF391 antibody can be used for detection of ZNF391 by ELISA at 1:312500. ZNF391 antibody can be used for detection of ZNF391 by western blot at 1 ug/mL, and HRP conjugated secondary antibody should be diluted 1:50,000 - 100,000.
USER NOTE:	Optimal dilutions for each application to be determined by the researcher.
POSITIVE CONTROL:	1) Cat. No. XBL-10410 - Fetal Lung Tissue Lysate
PREDICTED MOLECULAR WEIGHT:	41 kDa
IMMUNOGEN:	Antibody produced in rabbits immunized with a synthetic peptide corresponding a region of human ZNF391.
HOST SPECIES:	Rabbit

Properties

PURIFICATION:	Antibody is purified by peptide affinity chromatography method.
PHYSICAL STATE:	Lyophilized
BUFFER:	Antibody is lyophilized in PBS buffer with 2% sucrose. Add 50 uL of distilled water. Final antibody concentration is 1 mg/mL.
CONCENTRATION:	1 mg/ml
STORAGE CONDITIONS:	For short periods of storage (days) store at 4°C. For longer periods of storage, store ZNF391 antibody at -20°C. As with any antibody avoid repeat freeze-thaw cycles.
CLONALITY:	Polyclonal
CONJUGATE:	Unconjugated

Additional Info

ALTERNATE NAMES:	ZNF391, dJ153G14.3
ACCESSION NO.:	NP_001070249
PROTEIN GI NO.:	115583660

OFFICIAL SYMBOL: ZNF391

GENE ID: 346157

Background

BACKGROUND: ZNF391 belongs to the krueppel C2H2-type zinc-finger protein family. It contains 9 C2H2-type zinc fingers. ZNF391 may be involved in transcriptional regulation.

REFERENCES: 1) Kimura, K., (2006) Genome Res. 16 (1), 55-65.

FOR RESEARCH USE ONLY

December 12, 2016