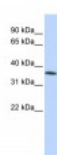




## C8orf70 Antibody

CATALOG NUMBER: 25-043



Antibody used in WB on Human HepG2 at  
0.2-1 ug/ml.

### Specifications

#### SPECIES REACTIVITY:

#### TESTED APPLICATIONS:

**APPLICATIONS:** C8orf70 antibody can be used for detection of C8orf70 by ELISA at 1:62500. C8orf70 antibody can be used for detection of C8orf70 by western blot at 1 ug/mL, and HRP conjugated secondary antibody should be diluted 1:50,000 - 100,000.

**USER NOTE:** Optimal dilutions for each application to be determined by the researcher.

**POSITIVE CONTROL:** 1) Cat. No. 1211 - HepG2 Cell Lysate

**PREDICTED MOLECULAR WEIGHT:** 35 kDa

**IMMUNOGEN:** Antibody produced in rabbits immunized with a synthetic peptide corresponding a region of human C8orf70.

**HOST SPECIES:** Rabbit

### Properties

**PURIFICATION:** Antibody is purified by peptide affinity chromatography method.

**PHYSICAL STATE:** Lyophilized

**BUFFER:** Antibody is lyophilized in PBS buffer with 2% sucrose. Add 50 uL of distilled water. Final antibody concentration is 1 mg/mL.

**CONCENTRATION:** 1 mg/ml

**STORAGE CONDITIONS:** For short periods of storage (days) store at 4°C. For longer periods of storage, store C8orf70 antibody at -20°C. As with any antibody avoid repeat freeze-thaw cycles.

**CLONALITY:** Polyclonal

**CONJUGATE:** Unconjugated

### Additional Info

**ALTERNATE NAMES:** C8orf70, CGI-62, C8orf70, FAM164A

**ACCESSION NO.:** NP\_057094

**PROTEIN GI NO.:** 223555989

OFFICIAL SYMBOL: ZC2HC1A

GENE ID: 51101

Background

BACKGROUND: The exact function of FAM164A (C8orf70) remains unknown.

REFERENCES: 1) Beausoleil, S.A., (2006) Nat. Biotechnol. 24 (10), 1285-1292.

FOR RESEARCH USE ONLY

December 12, 2016