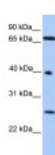




L3MBTL2 Antibody

CATALOG NUMBER: 25-003



Antibody used in WB on Human HeLa at
0.2-1 ug/ml.

Specifications

SPECIES REACTIVITY:	Human, Mouse, Rat
TESTED APPLICATIONS:	ELISA, WB
APPLICATIONS:	L3MBTL2 antibody can be used for detection of L3MBTL2 by ELISA at 1:312500. L3MBTL2 antibody can be used for detection of L3MBTL2 by western blot at 1 ug/mL, and HRP conjugated secondary antibody should be diluted 1:50,000 - 100,000.
USER NOTE:	Optimal dilutions for each application to be determined by the researcher.
POSITIVE CONTROL:	1) Cat. No. 1201 - HeLa Cell Lysate
PREDICTED MOLECULAR WEIGHT:	69 kDa
IMMUNOGEN:	Antibody produced in rabbits immunized with a synthetic peptide corresponding a region of human L3MBTL2.
HOST SPECIES:	Rabbit

Properties

PURIFICATION:	Antibody is purified by peptide affinity chromatography method.
PHYSICAL STATE:	Lyophilized
BUFFER:	Antibody is lyophilized in PBS buffer with 2% sucrose. Add 50 uL of distilled water. Final antibody concentration is 1 mg/mL.
CONCENTRATION:	1 mg/ml
STORAGE CONDITIONS:	For short periods of storage (days) store at 4°C. For longer periods of storage, store L3MBTL2 antibody at -20°C. As with any antibody avoid repeat freeze-thaw cycles.
CLONALITY:	Polyclonal
CONJUGATE:	Unconjugated

Additional Info

ALTERNATE NAMES:	L3MBTL2, H-I(3)mbt-I, L3MBT
ACCESSION NO.:	NP_001003689
PROTEIN GI NO.:	51173751

OFFICIAL SYMBOL: L3MBTL2

GENE ID: 83746

Background

BACKGROUND: L3MBTL2 contains 1 FCS-type zinc finger and 4 MBT repeats. It is putative Polycomb group (PcG) protein. PcG proteins maintain the transcriptionally repressive state of genes, probably via a modification of chromatin, rendering it heritably changed in its expressibility. Its association with a chromatin remodeling complex suggests that it may contribute to prevent expression of genes that trigger the cell into mitosis.

FOR RESEARCH USE ONLY

December 12, 2016