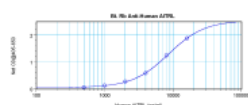


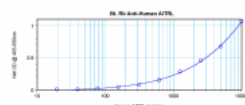


AITRL Antibody (biotin)

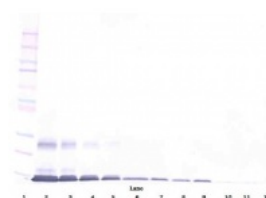
CATALOG NUMBER: 38-169



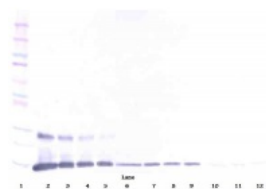
To detect hAITRL by direct ELISA (using 100 μ l/well antibody solution) a concentration of 0.25 – 1.0 μ g/ml of this antibody is required. This biotinylated polyclonal antibody, in conjunction with compatible secondary reagents, allows the detection of at least 0.2 – 0.4 ng/well of recombinant hAITRL.



To detect hAITRL by sandwich ELISA (using 100 μ l/well antibody solution) a concentration of 0.25 – 1.0 μ g/ml of this antibody is required. This biotinylated polyclonal antibody, in conjunction with ProSci's Polyclonal Anti-Human AITRL (38-168) as a capture antibody, allows the detection of at least 0.2 – 0.4 ng/well of recombinant hAITRL.



To detect hAITRL by Western Blot analysis this antibody can be used at a concentration of 0.1 - 0.2 μ g/ml. Used in conjunction with compatible secondary reagents the detection limit for recombinant hAITRL is 1.5 - 3.0 ng/lane, under either reducing or non-reducing conditions.



To detect hAITRL by Western Blot analysis this antibody can be used at a concentration of 0.1 - 0.2 μ g/ml. Used in conjunction with compatible secondary reagents the detection limit for recombinant hAITRL is 1.5 - 3.0 ng/lane, under either reducing or non-reducing conditions.

Specifications

SPECIES REACTIVITY: Human

TESTED APPLICATIONS: ELISA, WB

APPLICATIONS: ELISA:
Direct:

To detect hAITRL by direct ELISA (using 100 μ l/well antibody solution) a concentration of 0.25 - 1.0 μ g/mL of this antibody is required. This biotinylated polyclonal antibody, in conjunction with compatible secondary reagents, allows the detection of at least 0.2 - 0.4 ng/well of recombinant hAITRL.

Sandwich

To detect hAITRL by sandwich ELISA (using 100 μ l/well antibody solution) a concentration of 0.25 - 1.0 μ g/mL of

this antibody is required. This biotinylated polyclonal antibody, in conjunction with our polyclonal Anti-Human AITRL as a capture antibody, allows the detection of at least 0.2 - 0.4 ng/well of recombinant hAITRL.

Western Blot:

To detect hAITRL by Western Blot analysis this antibody can be used at a concentration of 0.1 - 0.2 ug/mL. Used in conjunction with compatible secondary reagents the detection limit for recombinant hAITRL is 1.5 - 3.0 ng/lane, under either reducing or non-reducing conditions.

USER NOTE:	Centrifuge vial prior to opening.
IMMUNOGEN:	Produced from sera of rabbits pre-immunized with highly pure (>98%) recombinant hAITRL. Human AITRL specific antibody was purified by affinity chromatography and then biotinylated.
HOST SPECIES:	Rabbit

Properties

PHYSICAL STATE:	Lyophilized
STORAGE CONDITIONS:	AITRL antibody is stable for at least 2 years from date of receipt at -20°C. The reconstituted antibody is stable for at least two weeks at 2-8°C. Frozen aliquots are stable for at least 6 months when stored at -20°C. Avoid repeated freeze-thaw cycles.
CLONALITY:	Polyclonal
CONJUGATE:	Biotin

Additional Info

ALTERNATE NAMES:	TL6, AITRL, GITRL, hGITRL, TL6, UNQ149/PRO175, Tumor necrosis factor ligand superfamily member 18, Activation-inducible TNF-related ligand
ACCESSION NO.:	Q9UNG2
PROTEIN GI NO.:	325511353
OFFICIAL SYMBOL:	TNFSF18
GENE ID:	8995

Background

FOR RESEARCH USE ONLY

December 13, 2016