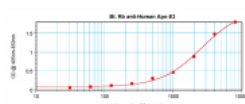
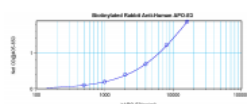




ApoE3 Antibody (biotin)

CATALOG NUMBER: 38-161



To detect hApoE3 by direct ELISA (using 100 μ l/well antibody solution) a concentration of 0.25 – 1.0 μ g/ml of this antibody is required. This biotinylated polyclonal antibody, in conjunction with compatible secondary reagents, allows the detection of at least 0.2 – 0.4 ng/well of recombinant hApoE3.

To detect hApoE3 by sandwich ELISA (using 100 μ l/well antibody solution) a concentration of 0.25 – 1.0 μ g/ml of this antibody is required. This biotinylated polyclonal antibody, in conjunction with ProSci's Polyclonal Anti-Human ApoE3 (38-160) as a capture antibody, allows the detection of at least 0.2 – 0.4 ng/well of recombinant hApoE3.

Specifications

SPECIES REACTIVITY: Human

TESTED APPLICATIONS: ELISA, WB

APPLICATIONS:

ELISA:

Direct:

To detect hApoE3 by direct ELISA (using 100 μ L/well antibody solution) a concentration of 0.25 - 1.0 μ g/mL of this antibody is required. This biotinylated polyclonal antibody, in conjunction with compatible secondary reagents, allows the detection of at least 0.2 - 0.4 ng/well of recombinant hApoE3.

Sandwich

To detect hApoE3 by sandwich ELISA (using 100 μ L/well antibody solution) a concentration of 0.25 - 1.0 μ g/mL of this antibody is required. This biotinylated polyclonal antibody, in conjunction with our polyclonal Anti-Human ApoE3 as a capture antibody, allows the detection of at least 0.2 - 0.4 ng/well of recombinant hApoE3.

Western Blot:

To detect hApoE3 by Western Blot analysis this antibody can be used at a concentration of 0.1 - 0.2 μ g/mL. Used in conjunction with compatible secondary reagents the detection limit for recombinant hApoE3 is 1.5 - 3.0 ng/lane, under either reducing or non-reducing

USER NOTE: Centrifuge vial prior to opening.

IMMUNOGEN: Produced from sera of rabbits pre-immunized with highly pure (>98%) recombinant hApoE3. Human ApoE3 specific antibody was purified by affinity chromatography and then biotinylated. *Cross Reactivity: human ApoE2, human ApoE4 in both western blot and sandwich ELISA

HOST SPECIES: Rabbit

Properties

PHYSICAL STATE:	Lyophilized
STORAGE CONDITIONS:	ApoE3 antibody is stable for at least 2 years from date of receipt at -20°C. The reconstituted antibody is stable for at least two weeks at 2-8°C. Frozen aliquots are stable for at least 6 months when stored at -20°C. Avoid repeated freeze-thaw cycles.
CLONALITY:	Polyclonal
CONJUGATE:	Biotin

Additional Info

ALTERNATE NAMES:	AD2, LPG, LDLCQ5Apolipoprotein EApo-E
ACCESSION NO.:	P02649
PROTEIN GI NO.:	114039
OFFICIAL SYMBOL:	APOE
GENE ID:	348

Background

FOR RESEARCH USE ONLY

December 13, 2016