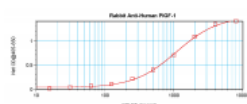


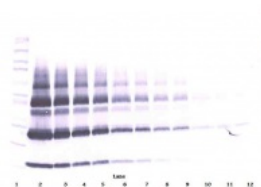


## PIGF Antibody

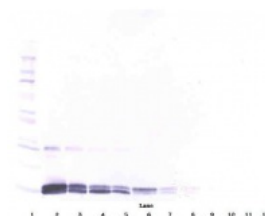
CATALOG NUMBER: 38-151



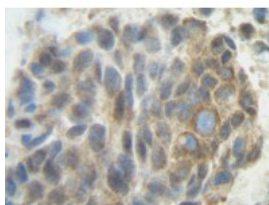
To detect hPIGF by sandwich ELISA (using 100  $\mu$ l/well antibody solution) a concentration of 0.5 - 2.0  $\mu$ g/ml of this antibody is required. This antigen affinity purified antibody, in conjunction with ProSci's Biotinylated Anti-Human PIGF (38-152) as a detection antibody, allows the detection of at least 0.2 - 0.4 ng/well of recombinant hPIGF.



To detect hPIGF by Western Blot analysis this antibody can be used at a concentration of 0.1 - 0.2  $\mu$ g/ml. Used in conjunction with compatible secondary reagents the detection limit for recombinant hPIGF is 1.5 - 3.0 ng/lane, under either reducing or non-reducing conditions.



To detect hPIGF by Western Blot analysis this antibody can be used at a concentration of 0.1 - 0.2  $\mu$ g/ml. Used in conjunction with compatible secondary reagents the detection limit for recombinant hPIGF is 1.5 - 3.0 ng/lane, under either reducing or non-reducing conditions.



This antibody stained formalin-fixed, paraffin-embedded sections of human breast invasive ductal carcinoma. The recommended concentration is 2.0  $\mu$ g/ml with an overnight incubation at 4°C. An HRP-labeled polymer detection system was used with a DAB chromogen. Heat induced antigen retrieval with a pH 6.0 sodium citrate buffer is recommended. Optimal concentrations and conditions may vary.

### Specifications

<b>SPECIES REACTIVITY:</b>	Human
<b>TESTED APPLICATIONS:</b>	ELISA, WB
<b>APPLICATIONS:</b>	<p>ELISA:</p> <p>Direct:</p> <p>To detect hPIGF by indirect ELISA (using 100 <math>\mu</math>L/well antibody solution) a concentration of 0.5 - 2.0 <math>\mu</math>g/mL of this antibody is required. This antigen affinity purified antibody, in conjunction with compatible secondary reagents,</p>

allows the detection of at least 0.2 - 0.4 ng/well of recombinant hPIGF.

#### Sandwich

To detect hPIGF by sandwich ELISA (using 100 uL/well antibody solution) a concentration of 0.5 - 2.0 ug/mL of this antibody is required. This antigen affinity purified antibody, in conjunction with our biotinylated Anti-Human PIGF as a detection antibody, allows the detection of at least 0.2 - 0.4 ng/well of recombinant hPIGF.

#### Western Blot:

To detect hPIGF by Western Blot analysis this antibody can be used at a concentration of 0.1 - 0.2 ug/mL. Used in conjunction with compatible secondary reagents the detection limit for recombinant hPIGF is 1.5 - 3.0 ng/lane, under either reducing or non-reducing conditions.

<b>USER NOTE:</b>	Centrifuge vial prior to opening.
<b>IMMUNOGEN:</b>	Produced from sera of rabbits pre-immunized with highly pure (>98%) recombinant hPIGF. Human PIGF specific antibody was purified by affinity chromatography employing immobilized hPIGF matrix.
<b>HOST SPECIES:</b>	Rabbit

#### Properties

<b>PHYSICAL STATE:</b>	Lyophilized
<b>STORAGE CONDITIONS:</b>	PIGF antibody is stable for at least 2 years from date of receipt at -20°C. The reconstituted antibody is stable for at least two weeks at 2-8°C. Frozen aliquots are stable for at least 6 months when stored at -20°C. Avoid repeated freeze-thaw cycles.
<b>CLONALITY:</b>	Polyclonal
<b>CONJUGATE:</b>	Unconjugated

#### Additional Info

<b>ALTERNATE NAMES:</b>	PGFL, PLGF, PIGF-2, D12S1900, SHGC-10760, PGFL, Placenta growth factorPIGF
<b>ACCESSION NO.:</b>	P49763
<b>PROTEIN GI NO.:</b>	17380553
<b>OFFICIAL SYMBOL:</b>	PGF
<b>GENE ID:</b>	5228

#### Background

<b>BACKGROUND:</b>	PLGF (also called Placenta Growth Factor) is an angiogenic factor that belongs to the cysteine-knot superfamily of growth factors. PLGF is expressed in placental tissues, colon and mammary carcinomas. It signals through the VEGFR-1/FLT1 receptor and stimulates endothelial cell proliferation and migration.
--------------------	--

FOR RESEARCH USE ONLY

December 13, 2016