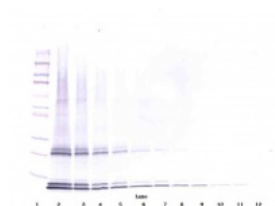


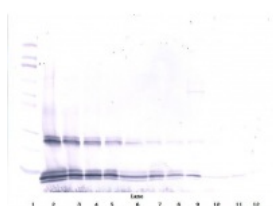


## IL-15 Antibody

CATALOG NUMBER: 38-126



To detect mIL-15 by Western Blot analysis this antibody can be used at a concentration of 0.1 - 0.2 ug/ml. Used in conjunction with compatible secondary reagents the detection limit for recombinant mIL-15 is 1.5 - 3.0 ng/lane, under either reducing or non-reducing conditions.



To detect mIL-15 by Western Blot analysis this antibody can be used at a concentration of 0.1 - 0.2 ug/ml. Used in conjunction with compatible secondary reagents the detection limit for recombinant mIL-15 is 1.5 - 3.0 ng/lane, under either reducing or non-reducing conditions.

### Specifications

<b>SPECIES REACTIVITY:</b>	Mouse
<b>TESTED APPLICATIONS:</b>	ELISA, Neut, WB
<b>APPLICATIONS:</b>	<p><b>Neutralization:</b> To yield one-half maximal inhibition [ND50] of the biological activity of mIL-15 (5.0 ng/mL), a concentration of 0.4 - 0.5 ug/mL of this antibody is required.</p> <p><b>ELISA:</b> <b>Indirect:</b> To detect mIL-15 by indirect ELISA (using 100 uL/well antibody solution) a concentration of 0.5 - 2.0 ug/mL of this antibody is required. This antigen affinity purified antibody, in conjunction with compatible secondary reagents, allows the detection of at least 0.2 - 0.4 ng/well of recombinant mIL-15.</p> <p><b>Sandwich</b> To detect mIL-15 by sandwich ELISA (using 100 uL/well antibody solution) a concentration of 0.5 - 2.0 ug/mL of this antibody is required. This antigen affinity purified antibody, in conjunction with our biotinylated Anti-Murine IL-15 as a detection antibody, allows the detection of at least 0.2 - 0.4 ng/well of recombinant mIL-15.</p> <p><b>Western Blot:</b> To detect mIL-15 by Western Blot analysis this antibody can be used at a concentration of 0.1 - 0.2 ug/mL. Used in conjunction with compatible secondary reagents the detection limit for recombinant mIL-15 is 1.5 - 3.0 ng/lane, under either reducing or non-reducing conditions.</p>
<b>USER NOTE:</b>	Centrifuge vial prior to opening.
<b>IMMUNOGEN:</b>	Produced from sera of rabbits pre-immunized with highly pure (>98%) recombinant mIL-15. Murine IL-15 specific antibody was purified by affinity chromatography employing immobilized mIL-15 matrix.
<b>HOST SPECIES:</b>	Rabbit

## Properties

<b>PHYSICAL STATE:</b>	Lyophilized
<b>STORAGE CONDITIONS:</b>	IL-15 antibody is stable for at least 2 years from date of receipt at -20°C. The reconstituted antibody is stable for at least two weeks at 2-8°C. Frozen aliquots are stable for at least 6 months when stored at -20°C. Avoid repeated freeze-thaw cycles.
<b>CLONALITY:</b>	Polyclonal
<b>CONJUGATE:</b>	Unconjugated

## Additional Info

<b>ALTERNATE NAMES:</b>	IL-15, AI503618Interleukin-15IL-15
<b>ACCESSION NO.:</b>	P48346
<b>PROTEIN GI NO.:</b>	1352449
<b>OFFICIAL SYMBOL:</b>	Il15
<b>GENE ID:</b>	16168

## Background

<b>BACKGROUND:</b>	IL15 (114 amino acids) is a cytokine that regulates T and natural killer cell activation and proliferation. It has a predicted molecular mass of approximately 12.5 kDa. Human IL15 shares approximately 97% and 73% amino acid sequence identity with simian and mouse IL15, respectively.
--------------------	---

FOR RESEARCH USE ONLY

December 13, 2016