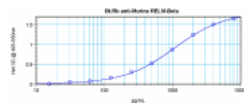
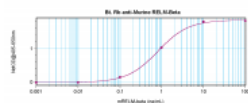




RELMb Antibody (biotin)

CATALOG NUMBER: 38-102



To detect Murine RELM-beta by direct ELISA (using 100 μ l/well antibody solution) a concentration of 0.25 – 1.0 μ g/ml of this antibody is required. This biotinylated polyclonal antibody, in conjunction with compatible secondary reagents, allows the detection of at least 0.2 – 0.4 ng/well of recombinant Murine RELM-beta.

To detect Murine RELM-beta by sandwich ELISA (using 100 μ l/well antibody solution) a concentration of 0.25 – 1.0 μ g/ml of this antibody is required. This biotinylated polyclonal antibody, in conjunction with ProSci's Polyclonal Anti-Murine RELM-beta (38-106) as a capture antibody, allows the detection of at least 0.2 – 0.4 ng/well of recombinant Murine RELM-beta.

Specifications

SPECIES REACTIVITY:	Mouse
TESTED APPLICATIONS:	ELISA, WB
APPLICATIONS:	<p>ELISA:</p> <p>Direct: To detect mRELMb by direct ELISA (using 100 μL/well antibody solution) a concentration of 0.25 - 1.0 μg/mL of this antibody is required. This biotinylated polyclonal antibody, in conjunction with compatible secondary reagents, allows the detection of at least 0.2 - 0.4 ng/well of recombinant mRELMb.</p> <p>Sandwich: To detect mRELMb by sandwich ELISA (using 100 μL/well antibody solution) a concentration of 0.25 - 1.0 μg/mL of this antibody is required.</p> <p>Western Blot: To detect mRELMb by Western Blot analysis this antibody can be used at a concentration of 0.1 - 0.2 μg/mL. Used in conjunction with compatible secondary reagents the detection limit for recombinant mRELMb is 1.5 - 3.0 ng/lane, under either reducing or non-reducing conditions.</p>
USER NOTE:	Centrifuge vial prior to opening.
IMMUNOGEN:	Produced from sera of rabbits pre-immunized with highly pure (>98%) recombinant mRELM β . Murine RELM β specific antibody was purified by affinity chromatography and then biotinylated.
HOST SPECIES:	Rabbit

Properties

PURIFICATION:	RELMb specific antibody was purified by affinity chromatography and then biotinylated.
----------------------	--

PHYSICAL STATE:	Lyophilized
STORAGE CONDITIONS:	RELMb antibody is stable for at least 2 years from date of receipt at -20°C. The reconstituted antibody is stable for at least two weeks at 2-8°C. Frozen aliquots are stable for at least 6 months when stored at -20°C. Avoid repeated freeze-thaw cycles.
CLONALITY:	Polyclonal
CONJUGATE:	Biotin

Additional Info

ALTERNATE NAMES:	Xcp3, Fizz2, Relmb, RELMbeta, 9030012B21Rik, Resistin-like beta, Cysteine-rich secreted protein A12-beta,
ACCESSION NO.:	Q99P86
PROTEIN GI NO.:	17380313
OFFICIAL SYMBOL:	Retnlb
GENE ID:	57263

Background

BACKGROUND:	RELM beta, is a secreted protein, a probable hormone, expressed only in the gastrointestinal tract, particularly the colon. The biological functions of RELM beta and its molecular targets, are not fully known but, it has been suggested that it plays a regulatory role during inflammation and may also act to establish links among adipose tissue, the intestine and the liver. Interestingly the molecular structure of RELM beta is highly homologous to that of the adipose-derived cytokine Resistin and RELM alpha.
--------------------	---

FOR RESEARCH USE ONLY

December 13, 2016