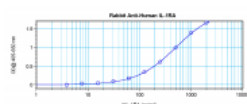


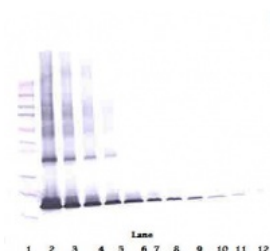


IL-1RA Antibody

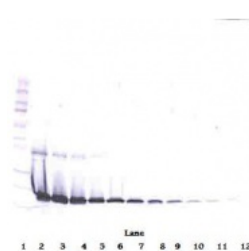
CATALOG NUMBER: 38-292



To detect Human IL-1RA by sandwich ELISA (using 100ul/well antibody solution) a concentration of 0.5 - 2.0 ug/ml of this antibody is required. This antigen affinity purified antibody, in conjunction with ProSci's Biotinylated Anti-Human IL-1RA (38-139) as a detection antibody, allows the detection of at least 0.2 - 0.4 ng/well of recombinant Human IL-1RA.



To detect Human IL-1RA by Western Blot analysis this antibody can be used at a concentration of 0.1 - 0.2 ug/ml. Used in conjunction with compatible secondary reagents the detection limit for recombinant Human IL-1RA is 1.5 - 3.0 ng/lane, under either reducing or non-reducing conditions.



To detect Human IL-1RA by Western Blot analysis this antibody can be used at a concentration of 0.1 - 0.2 ug/ml. Used in conjunction with compatible secondary reagents the detection limit for recombinant Human IL-1RA is 1.5 - 3.0 ng/lane, under either reducing or non-reducing conditions.

Specifications

| | |
|-----------------------------|--|
| SPECIES REACTIVITY: | Human |
| TESTED APPLICATIONS: | ELISA, Neut, WB |
| APPLICATIONS: | <p>ELISA:</p> <p>Sandwich:</p> <p>To detect Human IL-1RA by sandwich ELISA (using 100uL/well antibody solution) a concentration of 0.5 - 2.0 ug/mL of this antibody is required. This antigen affinity purified antibody, in conjunction with ProSci's Polyclonal Biotinylated Anti-Human IL-1RA (38-139) as a detection antibody, allows the detection of at least 0.2 - 0.4 ng/well of recombinant Human IL-1RA.</p> <p>Western Blot:</p> <p>To detect Human IL-1RA by Western Blot analysis this antibody can be used at a concentration of 0.1 - 0.2 ug/mL. Used in conjunction with compatible secondary reagents the detection limit for recombinant Human IL-1RA is 1.5 - 3.0 ng/lane, under either reducing or non-reducing conditions.</p> <p>Neutralization:</p> <p>To yield one-half maximal inhibition [ND50] of the biological activity of Human IL-1RA (50.0 ng/mL) and Human IL-1a(50.0 pg/mL), a concentration of 2.5-3.7 ug/mL of this antibody is required.</p> |
| USER NOTE: | Centrifuge vial prior to opening. |
| IMMUNOGEN: | E.coli derived Recombinant Human IL-1Ra |
| HOST SPECIES: | Rabbit |

Properties

| | |
|----------------------------|---|
| PURIFICATION: | IL-1RA specific antibody was purified by affinity chromatography employing an immobilized Human IL-1RA matrix. |
| PHYSICAL STATE: | Lyophilized |
| STORAGE CONDITIONS: | The lyophilized antibody is stable for at least 2 years from date of receipt at -20°C. The reconstituted antibody is stable for at least two weeks at 2-80°C. Frozen aliquots are stable for at least 6 months when stored at -20°C. Avoid repeated freeze-thaw cycles. |
| CLONALITY: | Polyclonal |
| CONJUGATE: | Unconjugated |

Additional Info

| | |
|-------------------------|---|
| ALTERNATE NAMES: | DIRA, IRAP, IL1F3, IL1RA, MVCD4, IL-1RN, IL-1ra, IL-1ra3, ICIL-1RA, Interleukin-1 receptor antagonist protein |
| ACCESSION NO.: | P18510 |
| PROTEIN GI NO.: | 124312 |
| OFFICIAL SYMBOL: | IL1RN |
| GENE ID: | 3557 |

Background

FOR RESEARCH USE ONLY

December 13, 2016