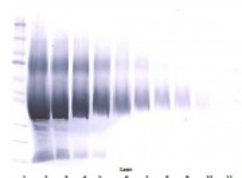
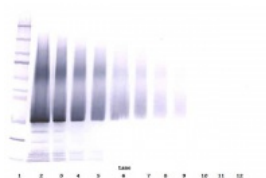
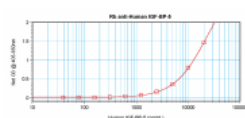




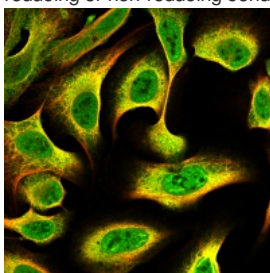
## IGF-BP5 Antibody

CATALOG NUMBER: 38-289



To detect hIGF-BP5 by sandwich ELISA (using 100  $\mu$ l/well antibody solution) a concentration of 0.5 - 2.0  $\mu$ g/ml of this antibody is required. This antigen affinity purified antibody, in conjunction with ProSci's Biotinylated Anti-Human IGF-BP5 (38-154) as a detection antibody, allows the detection of at least 0.2 - 0.4 ng/well of recombinant hIGF-BP5.

To detect hIGF-BP5 by Western Blot analysis this antibody can be used at a concentration of 0.1 - 0.2  $\mu$ g/ml. Used in conjunction with compatible secondary reagents the detection limit for recombinant hIGF-BP5 is 1.5 - 3.0 ng/lane, under either reducing or non-reducing conditions.



This antibody stained U-2 OS and U-251 MG cells. The primary antibody was incubated at 2.0 mg/ml overnight at 4°C followed by a fluorescent labeled secondary antibody. Optimal concentrations and conditions may vary. Information and photo are courtesy of the Cell Profiling group, SciLifeLab Stockholm.

To detect hIGF-BP5 by Western Blot analysis this antibody can be used at a concentration of 0.1 - 0.2  $\mu$ g/ml. Used in conjunction with compatible secondary reagents the detection limit for recombinant hIGF-BP5 is 1.5 - 3.0 ng/lane, under either reducing or non-reducing conditions.

### Specifications

**SPECIES REACTIVITY:** Human

**TESTED APPLICATIONS:** ELISA, IHC, WB

**APPLICATIONS:** ELISA:

Sandwich:

To detect hIGF-BP5 by sandwich ELISA (using 100  $\mu$ L/well antibody solution) a concentration of 0.5 - 2.0  $\mu$ g/mL of this antibody is required. This antigen affinity purified antibody, in conjunction with ProSci's Polyclonal Biotinylated Anti-Human IGF-BP5 (38-154) as a detection antibody, allows the detection of at least 0.2 - 0.4 ng/well of recombinant hIGF-BP5.

#### Western Blot:

: To detect hIGF-BP5 by Western Blot analysis this antibody can be used at a concentration of 0.1 - 0.2 ug/mL. Used in conjunction with compatible secondary reagents the detection limit for recombinant hIGF-BP5 is 1.5 - 3.0 ng/lane, under either reducing or non-reducing conditions.

#### Immunohistochemistry:

This antibody stained U-2 OS and U-251 MG cells. The primary antibody was incubated at 2.0 mg/mL overnight at 4°C followed by a fluorescent labeled secondary antibody.

<b>USER NOTE:</b>	Centrifuge vial prior to opening.
<b>IMMUNOGEN:</b>	E.coli derived Recombinant Human IGF-BP5
<b>HOST SPECIES:</b>	Rabbit

#### Properties

<b>PURIFICATION:</b>	IGF-BP5 specific antibody was purified by affinity chromatography employing immobilized hIGF-BP5 matrix.
<b>PHYSICAL STATE:</b>	Lyophilized
<b>STORAGE CONDITIONS:</b>	The lyophilized antibody is stable for at least 2 years from date of receipt at -20°C. The reconstituted antibody is stable for at least two weeks at 2-80°C. Frozen aliquots are stable for at least 6 months when stored at -20°C. Avoid repeated freeze-thaw cycles.
<b>CLONALITY:</b>	Polyclonal
<b>CONJUGATE:</b>	Unconjugated

#### Additional Info

<b>ALTERNATE NAMES:</b>	IBP5, IBP5, Insulin-like growth factor-binding protein 5IBP-5
<b>ACCESSION NO.:</b>	P24593
<b>PROTEIN GI NO.:</b>	124069
<b>OFFICIAL SYMBOL:</b>	IGFBP5
<b>GENE ID:</b>	3488

#### Background

FOR RESEARCH USE ONLY

December 13, 2016