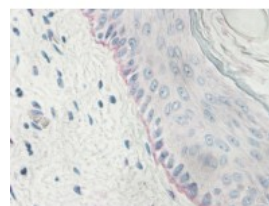
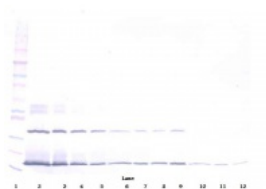
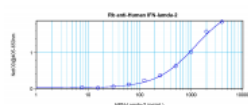




IFN-lambda2 Antibody

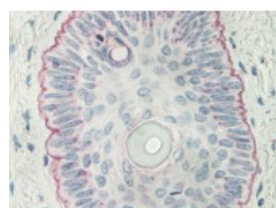
CATALOG NUMBER: 38-288



To detect Human IFN- λ 2 by sandwich ELISA (using 100 μ l/well antibody solution) a concentration of 0.5 - 2.0 μ g/ml of this antibody is required. This antigen affinity purified antibody, in conjunction with ProSci's Biotinylated Anti-Human IFN- λ 2 (38-172) as a detection antibody, allows the detection of at least 0.2 - 0.4 ng/well of recombinant Human IFN- λ 2.

To detect Human IFN- λ 2 by Western Blot analysis this antibody can be used at a concentration of 0.1 - 0.2 μ g/ml. When used in conjunction with compatible secondary reagents, the detection limit for recombinant Human IFN- λ 2 is 1.5 - 3.0 ng/lane, under either reducing or non-reducing conditions.

This antibody stained formalin-fixed, paraffin-embedded sections of normal human skin. The recommended concentration is 1.0 mg/ml overnight at 4°C. An alkaline phosphatase-labeled polymer detection system was used with a non-alcohol soluble red chromogen and proteinase K antigen retrieval. Optimal concentrations and conditions may vary.



This antibody stained formalin-fixed, paraffin-embedded sections of normal human skin. The recommended concentration is 1.0 mg/ml overnight at 4°C. An alkaline phosphatase-labeled polymer detection system was used with a non-alcohol soluble red chromogen and proteinase K antigen retrieval. Optimal concentrations and conditions may vary.

Specifications

SPECIES REACTIVITY:	Human
TESTED APPLICATIONS:	ELISA, IHC, WB
APPLICATIONS:	<p>ELISA:</p> <p>Sandwich:</p> <p>To detect Human IFN-lambda2 by sandwich ELISA (using 100 μL/well antibody solution) a concentration of 0.5 - 2.0 μg/mL of this antibody is required. This antigen affinity purified antibody, in conjunction with ProSci's</p>

Polyclonal Biotinylated Anti-Human IFN-lambda2 as a detection antibody, allows the detection of at least 0.2 - 0.4 ng/well of recombinant Human IFN-lambda2.

Western Blot:

: To detect Human IFN-lambda2 by Western Blot analysis this antibody can be used at a concentration of 0.1 - 0.2 ug/mL. When used in conjunction with compatible secondary reagents, the detection limit for recombinant Human IFN-lambda2 is 1.5 - 3.0 ng/lane, under either reducing or non-reducing conditions.

Immunohistochemistry:

This antibody stained formalin-fixed, paraffin-embedded sections of normal human skin. The recommended concentration is 1.0 mg/mL overnight at 4°C. An alkaline phosphatase-labeled polymer detection system was used with a non-alcohol soluble red chromogen and proteinase K antigen retrieval.

USER NOTE:	Centrifuge vial prior to opening.
IMMUNOGEN:	E.coli derived Recombinant Human IFN-λ2
HOST SPECIES:	Rabbit

Properties

PURIFICATION:	Human IFN-lambda2 specific antibody was purified by affinity chromatography employing immobilized Human IFN-lambda2 matrix.
PHYSICAL STATE:	Lyophilized
STORAGE CONDITIONS:	The lyophilized antibody is stable for at least 2 years from date of receipt at -20°C. The reconstituted antibody is stable for at least two weeks at 2-80°C. Frozen aliquots are stable for at least 6 months when stored at -20°C. Avoid repeated freeze-thaw cycles.
CLONALITY:	Polyclonal
CONJUGATE:	Unconjugated

Additional Info

ALTERNATE NAMES:	IL28A, IL-28A, IL28A, ZCYTO20, Interferon lambda-2, Cytokine Zcyto20, IFN-lambda-2
ACCESSION NO.:	Q8IZJ0
PROTEIN GI NO.:	55976531
OFFICIAL SYMBOL:	IFNL2
GENE ID:	282616

Background

FOR RESEARCH USE ONLY

December 13, 2016