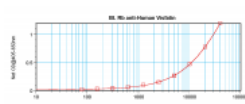
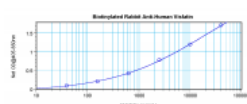




## Visfatin Antibody (biotin)

CATALOG NUMBER: 38-282



To detect Human Visfatin by direct ELISA (using 100  $\mu$ l/well antibody solution) a concentration of 0.25 – 1.0  $\mu$ g/ml of this antibody is required. This biotinylated polyclonal antibody, in conjunction with compatible secondary reagents, allows the detection of at least 0.2 – 0.4 ng/well of recombinant Human Visfatin.

To detect Human Visfatin by sandwich ELISA (using 100  $\mu$ l/well antibody solution) a concentration of 0.25 – 1.0  $\mu$ g/ml of this antibody is required. This biotinylated polyclonal antibody, in conjunction with ProSci's Polyclonal Anti-Human Visfatin (38-271) as a capture antibody, allows the detection of at least 0.2 – 0.4 ng/well of recombinant Human Visfatin.

### Specifications

<b>SPECIES REACTIVITY:</b>	Human
<b>TESTED APPLICATIONS:</b>	ELISA, WB
<b>APPLICATIONS:</b>	<p><b>ELISA:</b></p> <p><b>Direct:</b></p> <p>To detect Human Visfatin by direct ELISA (using 100 <math>\mu</math>L/well antibody solution) a concentration of 0.25 - 1.0 <math>\mu</math>g/mL of this antibody is required. This biotinylated polyclonal antibody, in conjunction with compatible secondary reagents, allows the detection of at least 0.2 - 0.4 ng/well of recombinant Human Visfatin.</p> <p><b>Sandwich</b></p> <p>To detect Human Visfatin by sandwich ELISA (using 100 <math>\mu</math>L/well antibody solution) a concentration of 0.25 - 1.0 <math>\mu</math>g/mL of this antibody is required. This biotinylated polyclonal antibody, in conjunction with ProSci's Polyclonal Anti-Human Visfatin (38-271) as a capture antibody, allows the detection of at least 0.2 - 0.4 ng/well of recombinant Human Visfatin.</p> <p><b>Western Blot:</b></p> <p>To detect Human Visfatin by Western Blot analysis this antibody can be used at a concentration of 0.1 - 0.2 <math>\mu</math>g/mL. When used in conjunction with compatible secondary reagents the detection limit for recombinant Human Visfatin is 1.5 - 3.0 ng/lane, under either reducing or non-reducing conditions.</p>
<b>USER NOTE:</b>	Centrifuge vial prior to opening.
<b>IMMUNOGEN:</b>	Produced from sera of rabbits immunized with highly pure recombinant Human Visfatin. Human Visfatin specific antibody was purified by affinity chromatography and then biotinylated.
<b>HOST SPECIES:</b>	Rabbit

## Properties

<b>PHYSICAL STATE:</b>	Lyophilized
<b>STORAGE CONDITIONS:</b>	The lyophilized antibody is stable for at least 2 years from date of receipt at -20°C. The reconstituted antibody is stable for at least two weeks at 2-80°C. Frozen aliquots are stable for at least 6 months when stored at -20°C. Avoid repeated freeze-thaw cycles.
<b>CLONALITY:</b>	Polyclonal
<b>CONJUGATE:</b>	Biotin

## Additional Info

<b>ALTERNATE NAMES:</b>	VF, PBEF, PBEF1, VISFATIN, 1110035O14Rik, Nicotinamide phosphoribosyltransferase, Pre-B-cell colony-enhancing factor 1, NAmPRTase
<b>ACCESSION NO.:</b>	P43490
<b>PROTEIN GI NO.:</b>	1172027
<b>OFFICIAL SYMBOL:</b>	NAMPT
<b>GENE ID:</b>	10135

## Background

FOR RESEARCH USE ONLY

December 13, 2016