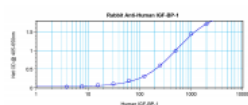


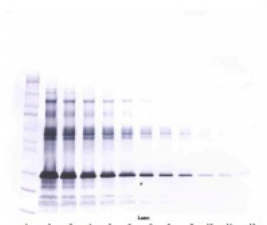


## IGF-BP1 Antibody

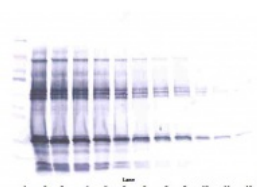
CATALOG NUMBER: 38-265



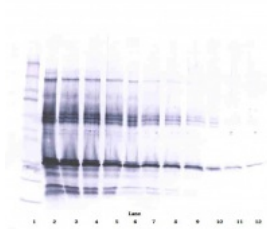
To detect hIGF-BP1 by sandwich ELISA (using 100ul/well antibody solution) a concentration of 0.5 - 2.0 ug/ml of this antibody is required. This antigen affinity purified antibody, in conjunction with ProSci's Biotinylated Anti-Human IGF-BP1 (38-276) as a detection antibody, allows the detection of at least 0.2 - 0.4 ng/well of recombinant hIGF-BP1.



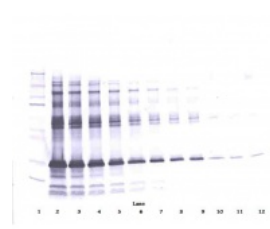
To detect hIGF-BP1 by Western Blot analysis this antibody can be used at a concentration of 0.1 - 0.2 ug/ml. Used in conjunction with compatible secondary reagents the detection limit for recombinant hIGF-BP1 is 1.5 - 3.0 ng/lane, under either reducing or non-reducing conditions.



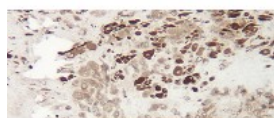
To detect hIGF-BP1 by Western Blot analysis this antibody can be used at a concentration of 0.1 - 0.2 ug/ml. Used in conjunction with compatible secondary reagents the detection limit for recombinant hIGF-BP1 is 1.5 - 3.0 ng/lane, under either reducing or non-reducing conditions.



To detect hIGF-BP1 by Western Blot analysis this antibody can be used at a concentration of 0.1 - 0.2 ug/ml. Used in conjunction with compatible secondary reagents the detection limit for recombinant hIGF-BP1 is 1.5 - 3.0 ng/lane, under either reducing or non-reducing conditions.



To detect hIGF-BP1 by Western Blot analysis this antibody can be used at a concentration of 0.1 - 0.2 ug/ml. Used in conjunction with compatible secondary reagents the detection limit for recombinant hIGF-BP1 is 1.5 - 3.0 ng/lane, under either reducing or non-reducing conditions.



This antibody stained formalin-fixed, paraffin-embedded sections of human normal placenta. The recommended concentration is 0.125 ug/ml- 0.200 ug/ml

with an overnight incubation at 4°C. An HRP-labeled polymer detection system was used with a DAB chromogen. Heat induced antigen retrieval with a pH 6.0 sodium citrate buffer is recommended. Optimal concentrations and conditions may vary.

### Specifications

<b>SPECIES REACTIVITY:</b>	Human
<b>TESTED APPLICATIONS:</b>	ELISA, WB
<b>APPLICATIONS:</b>	<p><b>ELISA:</b></p> <p><b>Sandwich:</b></p> <p>To detect hIGF-BP1 by sandwich ELISA (using 100 uL/well antibody solution) a concentration of 0.5 - 2.0 ug/mL of this antibody is required. This antigen affinity purified antibody, in conjunction with ProSci's Biotinylated Anti-Human IGF-BP1 (38-276) as a detection antibody, allows the detection of at least 0.2 - 0.4 ng/well of recombinant hIGF-BP1.</p> <p><b>Western Blot:</b></p> <p>To detect hIGF-BP1 by Western Blot analysis this antibody can be used at a concentration of 0.1 - 0.2 ug/mL. Used in conjunction with compatible secondary reagents the detection limit for recombinant hIGF-BP1 is 1.5 - 3.0 ng/lane, under either reducing or non-reducing conditions.</p>
<b>USER NOTE:</b>	Centrifuge vial prior to opening.
<b>IMMUNOGEN:</b>	Produced from sera of rabbits immunized with highly pure recombinant Human IGF-BP1. Human IGF-BP1 specific antibody was purified by affinity chromatography employing an immobilized Human IGF-BP1 matrix.
<b>HOST SPECIES:</b>	Rabbit

### Properties

<b>PHYSICAL STATE:</b>	Lyophilized
<b>STORAGE CONDITIONS:</b>	The lyophilized antibody is stable for at least 2 years from date of receipt at -20°C. The reconstituted antibody is stable for at least two weeks at 2-80°C. Frozen aliquots are stable for at least 6 months when stored at -20°C. Avoid repeated freeze-thaw cycles.
<b>CLONALITY:</b>	Polyclonal
<b>CONJUGATE:</b>	Unconjugated

### Additional Info

<b>ALTERNATE NAMES:</b>	AFBP, IBP1, PP12, IGF-BP25, hIGFBP-1, Insulin-like growth factor-binding protein 1, Placental protein 12, IBP-1
<b>ACCESSION NO.:</b>	P08833
<b>PROTEIN GI NO.:</b>	124055
<b>OFFICIAL SYMBOL:</b>	IGFBP1
<b>GENE ID:</b>	3484

### Background

FOR RESEARCH USE ONLY

December 13, 2016