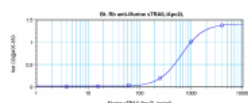


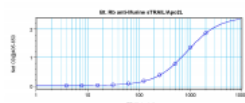


TRAIL Antibody (biotin)

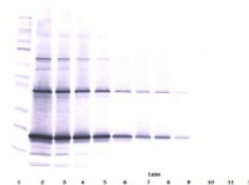
CATALOG NUMBER: 38-260



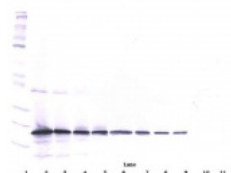
To detect Murine TRAIL by direct ELISA (using 100 µl/well) a concentration of approximately 1.0 µg/ml of this antibody is required. This biotinylated polyclonal antibody allows the detection of at least 0.2 – 0.4 ng/well of recombinant Murine TRAIL.



To detect Murine TRAIL by sandwich ELISA (using 100 µl/well) a concentration of 0.25 – 1.0 µg/ml of this antibody is required. This biotinylated polyclonal antibody, in conjunction with ProSci's Polyclonal Anti-Murine TRAIL (38-259) as a capture antibody, allows the detection of at least 0.2 – 0.4 ng/well of recombinant Murine TRAIL.



To detect Murine TRAIL by Western Blot analysis this antibody can be used at a concentration of 0.1 - 0.2 mg/ml. When used in conjunction with compatible development reagents the detection limit for recombinant Murine TRAIL is 1.5 – 3.0 ng/lane, under either reducing or non-reducing conditions.



To detect Murine TRAIL by Western Blot analysis this antibody can be used at a concentration of 0.1 - 0.2 mg/ml. When used in conjunction with compatible development reagents the detection limit for recombinant Murine TRAIL is 1.5 – 3.0 ng/lane, under either reducing or non-reducing conditions.

Specifications

SPECIES REACTIVITY: Mouse

TESTED APPLICATIONS: ELISA, WB

APPLICATIONS: ELISA:
Direct:

To detect Murine TRAIL by direct ELISA (using 100 µl/well antibody solution) a concentration of 1.0 µg/mL of this antibody is required. This biotinylated polyclonal antibody allows the detection of at least 0.2 - 0.4 ng/well of recombinant Murine TRAIL.

Sandwich

To detect Murine TRAIL by sandwich ELISA (using 100 uL/well antibody solution) a concentration of 0.25 - 1.0 ug/mL of this antibody is required. This biotinylated polyclonal antibody, in conjunction with ProSci's Polyclonal Anti-Murine TRAIL (38-259) as a capture antibody, allows the detection of at least 0.2 - 0.4 ng/well of recombinant Murine TRAIL.

Western Blot:

To detect Murine TRAIL by Western Blot analysis this antibody can be used at a concentration of 0.1 - 0.2 ug/mL. When used in conjunction with compatible development reagents, the detection limit for recombinant Murine TRAIL is 1.5 - 3.0 ng/lane, under either reducing or non-reducing conditions.

USER NOTE:	Centrifuge vial prior to opening.
IMMUNOGEN:	Produced from sera of rabbits immunized with highly pure recombinant Murine TRAIL. Murine TRAIL specific antibody was purified by affinity chromatography and then biotinylated.
HOST SPECIES:	Rabbit

Properties

PHYSICAL STATE:	Lyophilized
STORAGE CONDITIONS:	The lyophilized antibody is stable for at least 2 years from date of receipt at -20°C. The reconstituted antibody is stable for at least two weeks at 2-80°C. Frozen aliquots are stable for at least 6 months when stored at -20°C. Avoid repeated freeze-thaw cycles.
CLONALITY:	Polyclonal
CONJUGATE:	Biotin

Additional Info

ALTERNATE NAMES:	TL2, Ly81, Trail, APO-2L, AI448571, A330042I21Rik, Tumor necrosis factor ligand superfamily member 10, TNF-related apoptosis-inducing ligand, Protein TRAIL
ACCESSION NO.:	P50592
PROTEIN GI NO.:	1730016
OFFICIAL SYMBOL:	Tnfsf10
GENE ID:	22035

Background

FOR RESEARCH USE ONLY

December 13, 2016