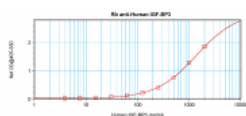


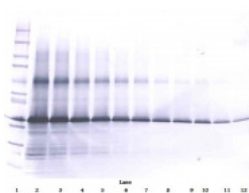


IGF-BP3 Antibody

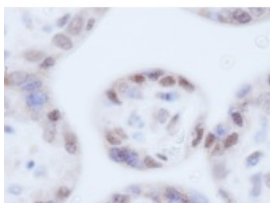
CATALOG NUMBER: 38-250



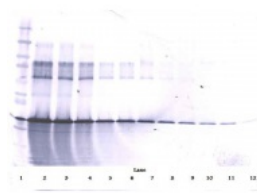
To detect hIGF-BP3 by sandwich ELISA (using 100 μ l/well antibody solution) a concentration of 0.5 - 2.0 μ g/ml of this antibody is required. This antigen affinity purified antibody, in conjunction with ProSci's Biotinylated Anti-Human IGF-BP3 (38-153) as a detection antibody, allows the detection of at least 0.2 - 0.4 ng/well of recombinant hIGF-BP3.



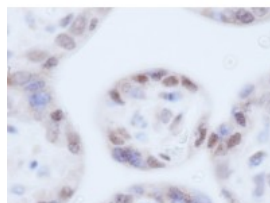
To detect hIGF-BP3 by Western Blot analysis this antibody can be used at a concentration of 0.1 - 0.2 μ g/ml. Used in conjunction with compatible secondary reagents the detection limit for recombinant hIGF-BP3 is 1.5 - 3.0 ng/lane, under either reducing or non-reducing conditions.



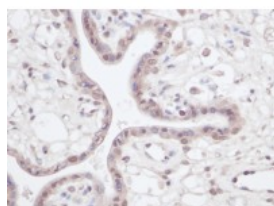
This antibody stained formalin-fixed, paraffin-embedded sections of normal human placenta. The recommended concentrations are 2.5 μ g/ml-0.5 μ g/ml for two hours at room temperature. An HRP-labeled polymer detection system was used with DAB chromogen. Heat induced antigen retrieval was performed with a pH 6.0 Sodium Citrate buffer. Optimal concentrations and conditions may vary.



To detect hIGF-BP3 by Western Blot analysis this antibody can be used at a concentration of 0.1 - 0.2 μ g/ml. Used in conjunction with compatible secondary reagents the detection limit for recombinant hIGF-BP3 is 1.5 - 3.0 ng/lane, under either reducing or non-reducing conditions.



This antibody stained formalin-fixed, paraffin-embedded sections of normal human placenta. The recommended concentrations are 2.5 μ g/ml-0.5 μ g/ml for two hours at room temperature. An HRP-labeled polymer detection system was used with DAB chromogen. Heat induced antigen retrieval was performed with a pH 6.0 Sodium Citrate buffer. Optimal concentrations and conditions may vary.



This antibody stained formalin-fixed,

paraffin-embedded sections of normal human placenta. The recommended concentrations are 2.5ug/ml-0.5 ug/ml for two hours at room temperature. An HRP-labeled polymer detection system was used with DAB chromogen. Heat induced antigen retrieval was performed with a pH 6.0 Sodium Citrate buffer. Optimal concentrations and conditions may vary.

Specifications

| | |
|-----------------------------|--|
| SPECIES REACTIVITY: | Human |
| TESTED APPLICATIONS: | ELISA, WB |
| APPLICATIONS: | <p>ELISA:</p> <p>Indirect:</p> <p>To detect hIGF-BP3 by indirect ELISA (using 100 uL/well antibody solution) a concentration of 0.5 - 2.0 ug/mL of this antibody is required. This antigen affinity purified antibody, in conjunction with compatible secondary reagents, allows the detection of at least 0.2 - 0.4 ng/well of recombinant hIGF-BP3.</p> <p>Sandwich</p> <p>To detect hIGF-BP3 by sandwich ELISA (using 100 uL/well antibody solution) a concentration of 0.5 - 2.0 ug/mL of this antibody is required. This antigen affinity purified antibody, in conjunction with our Biotinylated Anti-Human IGF-BP3 (38-153) as a detection antibody, allows the detection of at least 0.2 - 0.4 ng/well of recombinant hIGF-BP3.</p> <p>Western Blot:</p> <p>To detect hIGF-BP3 by Western Blot analysis this antibody can be used at a concentration of 0.1 - 0.2 ug/mL. Used in conjunction with compatible secondary reagents the detection limit for recombinant hIGF-BP3 is 1.5 - 3.0 ng/lane, under either reducing or non-reducing conditions.</p> |
| USER NOTE: | Centrifuge vial prior to opening. |
| IMMUNOGEN: | Produced from sera of rabbits immunized with highly pure recombinant Rat SCF. Rat SCF specific antibody was purified by affinity chromatography employing an immobilized Rat SCF matrix. |
| HOST SPECIES: | Rabbit |

Properties

| | |
|----------------------------|---|
| PHYSICAL STATE: | Lyophilized |
| STORAGE CONDITIONS: | The lyophilized antibody is stable for at least 2 years from date of receipt at -20°C. The reconstituted antibody is stable for at least two weeks at 2-80°C. Frozen aliquots are stable for at least 6 months when stored at -20°C. Avoid repeated freeze-thaw cycles. |
| CLONALITY: | Polyclonal |
| CONJUGATE: | Unconjugated |

Additional Info

| | |
|-------------------------|--|
| ALTERNATE NAMES: | IBP3, BP-53, IBP3, Insulin-like growth factor-binding protein 3IBP-3 |
| ACCESSION NO.: | P17936 |
| PROTEIN GI NO.: | 146327827 |
| OFFICIAL SYMBOL: | IGFBP3 |
| GENE ID: | 3486 |

Background

FOR RESEARCH USE ONLY

December 13, 2016