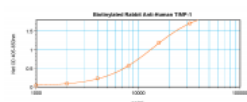


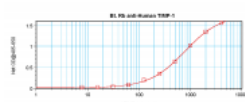


TIMP-1 Antibody (biotin)

CATALOG NUMBER: 38-216



To detect hTIMP-1 by direct ELISA (using 100 μ l/well antibody solution) a concentration of 0.25 – 1.0 μ g/ml of this antibody is required. This biotinylated polyclonal antibody, in conjunction with compatible secondary reagents, allows the detection of at least 0.2 – 0.4 ng/well of recombinant hTIMP-1.



To detect hTIMP-1 by sandwich ELISA (using 100 μ l/well antibody solution) a concentration of 0.25 – 1.0 μ g/ml of this antibody is required. This biotinylated polyclonal antibody, in conjunction with ProSci's Polyclonal Anti-Human TIMP-1 (38-215) as a capture antibody, allows the detection of at least 0.2 – 0.4 ng/well of recombinant hTIMP-1.

Specifications

SPECIES REACTIVITY:	Human
TESTED APPLICATIONS:	ELISA, WB
APPLICATIONS:	<p>ELISA:</p> <p>Direct:</p> <p>To detect hTIMP-1 by direct ELISA (using 100 μL/well antibody solution) a concentration of 0.25 - 1.0 μg/mL of this antibody is required. This biotinylated polyclonal antibody, in conjunction with compatible secondary reagents, allows the detection of at least 0.2 - 0.4 ng/well of recombinant hTIMP-1.</p> <p>Sandwich</p> <p>To detect hTIMP-1 by sandwich ELISA (using 100 μL/well antibody solution) a concentration of 0.25 - 1.0 μg/mL of this antibody is required. This biotinylated polyclonal antibody, in conjunction with our polyclonal Anti-Human TIMP-1 as a capture antibody, allows the detection of at least 0.2 - 0.4 ng/well of recombinant hTIMP-1.</p> <p>Western Blot:</p> <p>To detect hTIMP-1 by Western Blot analysis this antibody can be used at a concentration of 0.1 - 0.2 μg/mL. Used in conjunction with compatible secondary reagents the detection limit for recombinant hTIMP-1 is 1.5 - 3.0 ng/lane, under either reducing or non-reducing conditions.</p>
USER NOTE:	Centrifuge vial prior to opening.
IMMUNOGEN:	Produced from sera of rabbits pre-immunized with highly pure (>98%) recombinant hTIMP-1 (human Tissue Inhibitor of Metalloproteinases-1). Human TIMP-1 specific antibody was purified by affinity chromatography and then biotinylated.
HOST SPECIES:	Rabbit

Properties

PHYSICAL STATE:	Lyophilized
STORAGE CONDITIONS:	TIMP-1 antibody is stable for at least 2 years from date of receipt at -20°C. The reconstituted antibody is stable for at least two weeks at 2-8°C. Frozen aliquots are stable for at least 6 months when stored at -20°C. Avoid repeated freeze-thaw cycles.
CLONALITY:	Polyclonal
CONJUGATE:	Biotin

Additional Info

ALTERNATE NAMES:	EPA, EPO, HCI, CLGI, TIMP, Metalloproteinase inhibitor 1, Erythroid-potentiating activity, EPA
ACCESSION NO.:	P01033
PROTEIN GI NO.:	135850
OFFICIAL SYMBOL:	TIMP1
GENE ID:	7076

Background

BACKGROUND:	Tissue inhibitor of metalloproteinases 1 (TIMP1) and Tissue inhibitor of metalloproteinases 2 (TIMP 2) have similar properties, specifically in inhibiting enzymes of the matrix metalloproteinase family, and are thought to be of great importance in the maintenance of connective tissue integrity. TIMP1 forms a complex of 1:1 stoichiometry with activated interstitial collagenases, activated stromelysin, active form of 72kDa Type IV collagenase (also known as MMP2 or gelatinase A), and latent and active forms of 92kDa Type IV collagenase (also known as MMP0 or gelatinase B). TIMPs inhibit the proteolytic invasiveness of tumour cells and normal placental trophoblast cells. TIMP1 is produced in low (pg/mL) levels by most cell types. Treatment of cells with the phorbol ester TPA stimulates production of TIMP1 in some cell types, but the low protein levels produced often require concentration of cell culture media to visualize the bands by Western Blotting.
--------------------	---

FOR RESEARCH USE ONLY

December 13, 2016