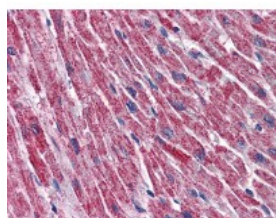




## DLDH Antibody [2D4]

CATALOG NUMBER: 51-940



Immunohistochemistry of human heart tissue stained using DLDH Monoclonal Antibody.

### Specifications

<b>SPECIES REACTIVITY:</b>	Human
<b>TESTED APPLICATIONS:</b>	ELISA, IHC, WB
<b>APPLICATIONS:</b>	DLDH antibody can be used in Western Blot, immunohistochemistry starting at 10 ug/mL, and immunoprecipitation.
<b>USER NOTE:</b>	Optimal dilutions for each application to be determined by the researcher.
<b>IMMUNOGEN:</b>	DLD (AAH18696, 1 a.a. ~ 510 a.a) full length recombinant protein with GST tag. MW of the GST tag alone is 26 KDa.
<b>HOST SPECIES:</b>	Mouse

### Properties

<b>PURIFICATION:</b>	Protein A Column
<b>PHYSICAL STATE:</b>	Liquid
<b>BUFFER:</b>	PBS, pH 7.2
<b>STORAGE CONDITIONS:</b>	Aliquot and store DLDH antibody at -20 °C or -80 °C. As with all antibodies avoid freeze/thaw cycles.
<b>CLONALITY:</b>	Monoclonal
<b>ISOTYPE:</b>	IgG3,k
<b>CONJUGATE:</b>	Unconjugated

### Additional Info

<b>ALTERNATE NAMES:</b>	DLD, Diaphorase, DLDH, Dihydrolipoamide dehydrogenase, E3, GCSL, Lipoyl dehydrogenase, PHE3, Lipoamide dehydrogenase, Lipoamide reductase, LAD
<b>ACCESSION NO.:</b>	P09622
<b>PROTEIN GI NO.:</b>	269849557
<b>OFFICIAL SYMBOL:</b>	DLD
<b>GENE ID:</b>	1738

FOR RESEARCH USE ONLY

December 13, 2016