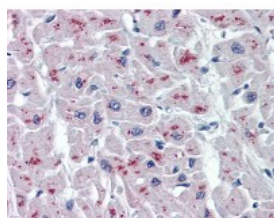




ASAH1 Antibody [1A7]

CATALOG NUMBER: 51-886



Immunohistochemistry of human heart tissue stained using ASAH1 Monoclonal Antibody.

Specifications

SPECIES REACTIVITY:	Human
TESTED APPLICATIONS:	ELISA, IHC, WB
APPLICATIONS:	ASAH1 antibody can be used in Western Blot starting at 2 ug/mL, and immunohistochemistry starting at 1:50.
USER NOTE:	Optimal dilutions for each application to be determined by the researcher.
IMMUNOGEN:	ASAH1 (NP_808592, 25 a.a. ~ 125 a.a) partial recombinant protein with GST tag. MW of the GST tag alone is 26 KDa.
HOST SPECIES:	Mouse

Properties

PURIFICATION:	Protein A Column
PHYSICAL STATE:	Liquid
BUFFER:	PBS, pH 7.2
STORAGE CONDITIONS:	Aliquot and store ASAH1 antibody at -20 °C or -80 °C. As with all antibodies avoid freeze/thaw cycles.
CLONALITY:	Monoclonal
ISOTYPE:	IgG3,k
CONJUGATE:	Unconjugated

Additional Info

ALTERNATE NAMES:	ASAH1, ACDase, Acid CDase, Acid ceramidase, ASAH, Acylsphingosine deacylase, PHP32, SMAPME, PHP, Putative 32 kDa heart protein
ACCESSION NO.:	Q13510
PROTEIN GI NO.:	239938949
OFFICIAL SYMBOL:	ASAH1
GENE ID:	427

Background

